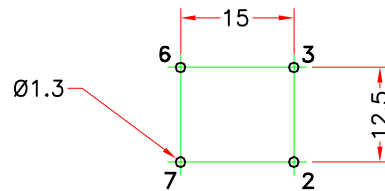


Viewed On Component Side



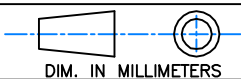
TECHNICAL DATA :

- Core : Toroid $\varnothing 25 / \varnothing 15 / H 10 \mu i$ 6000 Ferrite Material
- Wire : $\varnothing 0.80$ Grade 1 Class F
- Rated Current Per Winding : 6A referred to 250V – 50Hz and +60°C ambient temperature
- Rated Inductance Per Winding : 1.8mH –30% +50% at 10KHz , 0.1mA
- Rated DC Resistance Per Winding (Typical) : 38m Ω
- Test Voltage Between Windings : 1500VAC – 50Hz
- Climatic Category : DIN GKC (–40 to +125°C; humidity cat. C)
- Case Material : PBT at 30% Fibreglass UL94V0
- Packaging Unit : 286 pieces

RoHS compliance
Please, refer to general catalog for unspecified parameters.

a	
IND	DATE

Radiohm Specification



Designation : 42V32 6000

Part number : _____
Preliminary : Final :

Date : 16/11/2005

Customer Specification Approval

Part number : _____

Signature : _____ Name : _____ Title : _____ Date : _____