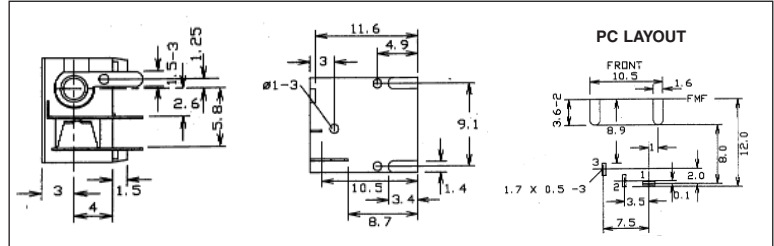


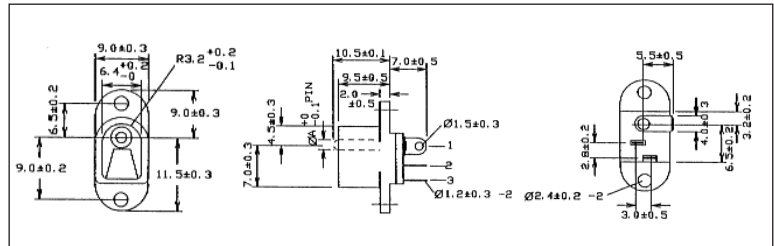


DC-12A PCB mounting pin / ring type with switch.
Rated 12V / 5A.
With 2.1mm dia. pin.

DC-12A (FC681485)

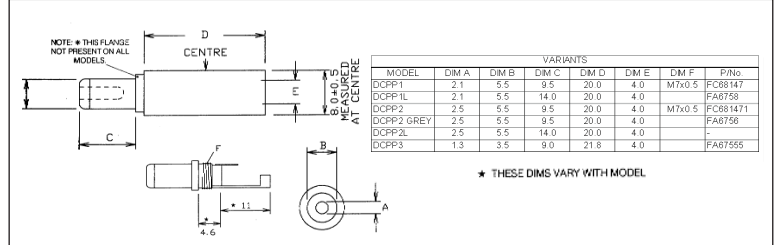


DC-13 panel mounting pin / ring type with switch.
Rated 12V / 5A.
DC-13A with 2.1mm dia. pin.
DC-13B with 2.5mm dia. pin.
DC-13A (FC681492)
DC-13B (FC681493)



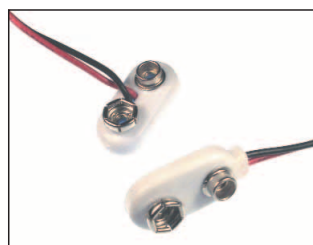
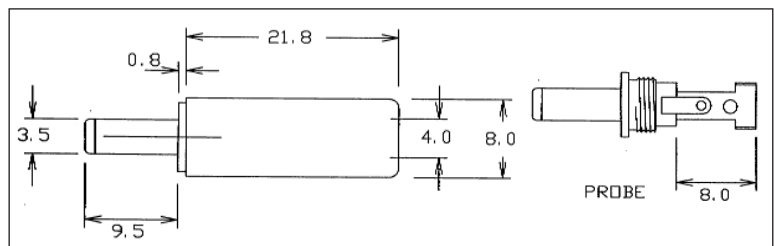
DCPP1 DC Line connector. Rated 12V / 5A.
DCPP1 with 2.1mm dia. pin.
DCPP2 with 2.5mm dia. pin.

DCPP1 (FC68147)
DCPP2 (FC681471)



DCPP3 DC Line connector. Rated 12V / 5A.
With 1.3mm dia. pin

DCPP3 (FA67555)



CCB-1 9V Battery connector. Cable length 220mm.
Tough molded body.
CCB-1A 'T' Type Cable length 220mm.
CCB-1 (FC6830)
CCB-1A (FC6831)

