

Buchsenleiste / Female header

Technical data:

Pitch: 2,00 mm
 Insulating material: High temp. Thermoplast UL94V-0
 Contact material: Copper alloy
 Rated current: 1,5 Amp.
 Rated voltage: 100 V_{RMS}/150 V_{DC}
 Withstanding voltage: min. 500 V_{RMS}
 Operating temperature: -40°C to +105°C

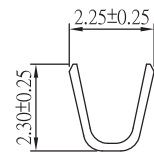
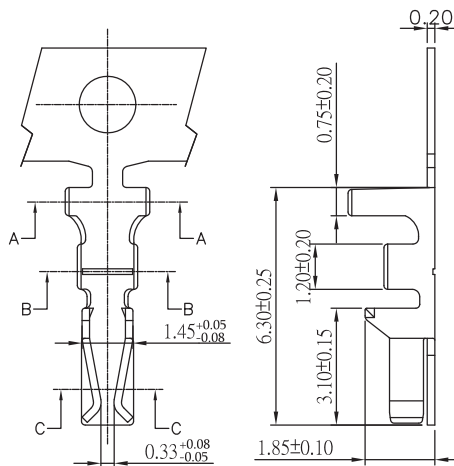
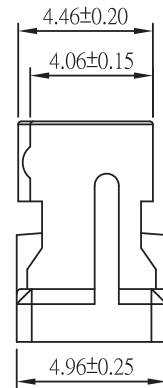
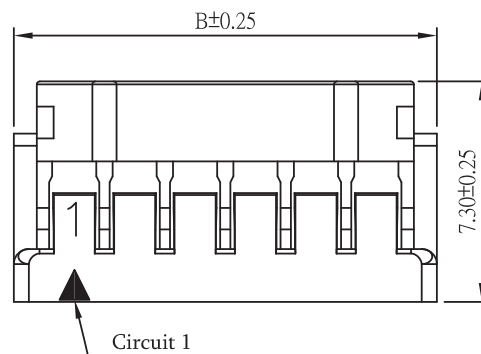
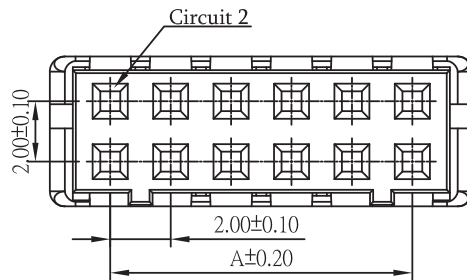


RoHS-compliant

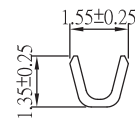
BLC22-0730/0446G-XXXL

XXX = pincount
 (see table)

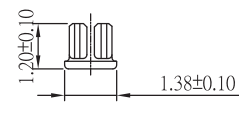
Pincount	Dimensions	
	A	B
002	2.00	6.00
003	4.00	8.00
004	6.00	10.00
005	8.00	12.00
006	10.00	14.00
007	12.00	16.00
008	14.00	18.00
009	16.00	20.00
010	18.00	22.00
011	20.00	24.00
012	22.00	26.00
013	24.00	28.00
014	26.00	30.00
015	28.00	32.00
016	30.00	34.00
017	32.00	36.00
018	34.00	38.00
019	36.00	40.00
020	38.00	42.00



SEC:A-A



SEC:B-B



SEC:C-C

Crimpcontact
 CC2-22/30-TT-RL
 Plating: Tin
 Packsize: 10.000 per Reel

BLC22-0730/0446G-XXXL