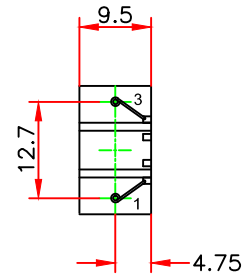
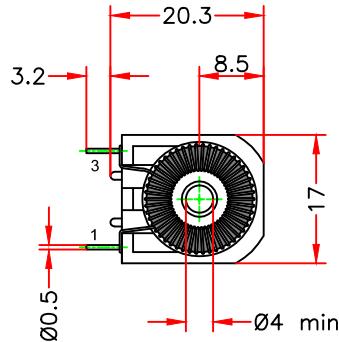
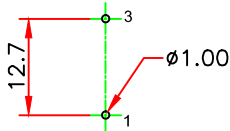


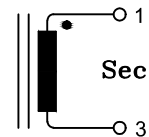
Viewed on  
component side



## TECHNICAL DATA :

Core : toroid Ø14 / Ø9 / H5  $\mu$ i 6000 ferrite material or equivalent  
 Wire : Ø0.18 grade 2 class F or equivalent  
 Windings : 50 turns  
 Typical inductance : 5mH at 10KHz , 0.1mA  
 DC resistance : 0.7  $\Omega$  max  
 Current primary peak (1turn) : 20A  
 Test voltage between primary / secondary : 2500 VAC – 50Hz  
 Climatic category : DIN GKC (-40° to +125°C; humidity cat. C)  
 Material case : PBT at 30% fibreglass UL94-V0 or equivalent

Schematics

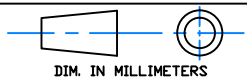


RoHS compliance

Please, refer to general catalog for unspecified parameters

a	
IND	DATE

## Radiohm Specification



Designation : 69V21 0050

Part number : \_\_\_\_\_

Date : 06/05/2024

Preliminary :

Final :

Checked by: Sami NCIRI

## Customer Specification Approval

Part number : \_\_\_\_\_

Signature : \_\_\_\_\_

Name : \_\_\_\_\_

Title : \_\_\_\_\_

Date : \_\_\_\_\_