

battery type: Lithium Button Cell
battery size: CR2430
chemical system: Lithium Manganese Dioxide

Conditions

nominal voltage: 3.0 V
open circuit voltage: 3.0...3.4 V (new battery)
 2.9...3.4 V (after 1 year storage at 20°C)

all measurements at 22 ± 2°C ambient

capacity rated: 275 mAh (discharge at 15kΩ resistive load; 24hours/day
 End Voltage (EV): 2.0V)
minimum: 260 mAh (discharge at 15kΩ resistive load; 24hours/day
 End Voltage (EV): 2.0V)

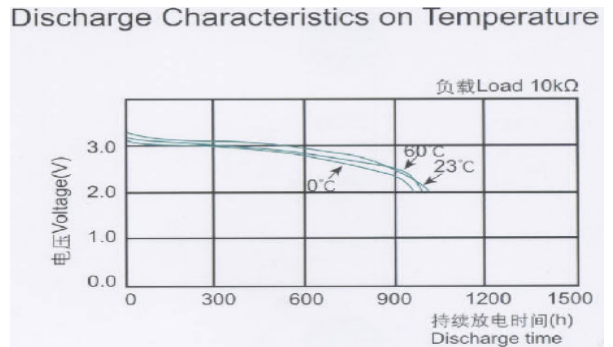
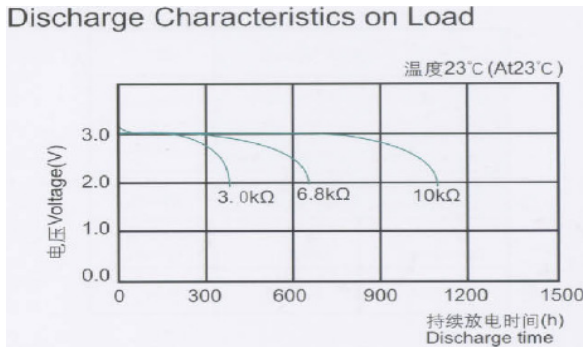
Service Life

at 15kΩ load; 24hours/day
 ≥ 1350 h EV: 2.0V (new battery (tested within 60 days after production))
 ≥ 1269 h EV: 2.0V (after 12 months)
 Standard discharge time ≥ 180 h at 2kΩ load (for QC measurement)

Discharge currents

standard: 0.4 mA
 max. recommended current under continuous discharge: 5 mA
 max. recommended current under pulse discharge: 20 mA

Discharge diagrams:

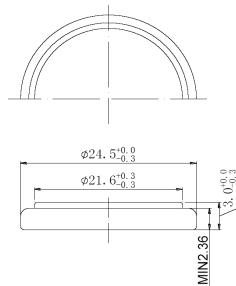


shelf life: 5 years under proper storage conditions (ta: ≤ 22°C; RH: 60 ± 15%)

operating temperature range: - 20...60 °C

example picture

mechanical specifications:



nominal weight: 4.0 g

blister card:
 dimensions: 55 x 200 x 6.0mm
 weight: approx. 24g (incl. batteries)

	ANSMANN Specifications for model:	CR2430 Lithium Button Cell "HyCell" 5 pcs tear-off blister package
	data sheet no. / part no.	1516-0106
	supplier no.	703385
	author / date	TG / 10.04.2018