

1

2

3

4

5

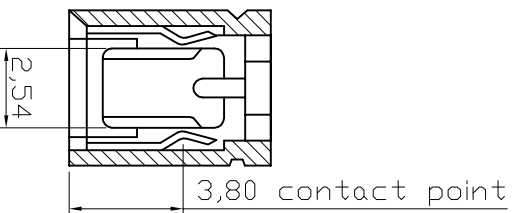
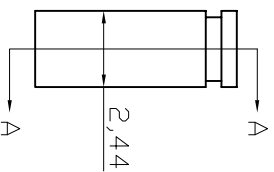
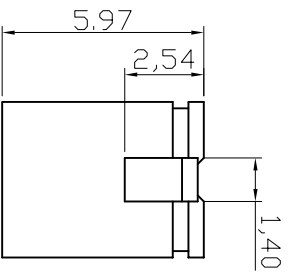
6

7

A

## NOTES:

1. Insulation: 30% Glass Filled PBT, UL94V-0
- ② 2. Contact : Brass
3. Current Rating: 3A Max
4. Dielectric Voltage: 1000V rms / 1 minute
5. Insulation Resistance: 1000M ohm Min.
6. Contact Resistance: 30m ohm Max.
7. Operating and Storage Temperature: -40°C ~ +105°C
- ④ 8. Mating Cycles: 10 Min.

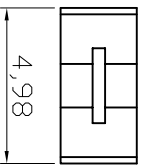


A-A Section

AKSPT/x - x

Color:  
 GREY - Grey  
 RED - Red  
 BLUE - Blue  
 BLACK - Black

Contact Area Plating: ④  
 G: Gold Flash  
 Z: Tinned



D

D

E

E

F

F

**RoHS compliant**  
 Unit:mm

G

G

H

H

Scale	Free										
TOLERANCE											
.X	±0.38	④	Update	07.06.2013	Winnie	Drawn	29.10.1995	Hellwig	Customer-No.	ASSMANN WSW-No.	AKSPT/x-X
.XX	±0.25	④	Update	15.10.2012	Any	Approved	07.06.2013	Winnie	Drawing-No.	ASS 0336 CO	rev04
.XXX	±0.13	③	Update the material of contact						Replace		SHEET
DIM	TOL	②	Update	27.07.2009	Rate	ASSMANN components					
X. °	±1°	①	Drawn	29.10.1995	Hellwig						
Angle	TOL										
UNIT	mm	Id.	Modification	Date	Name						

1

2

3

4

5

6

7