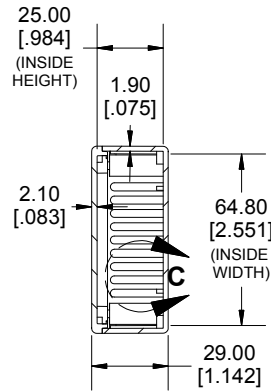
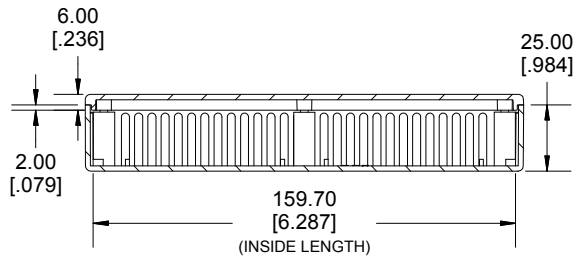
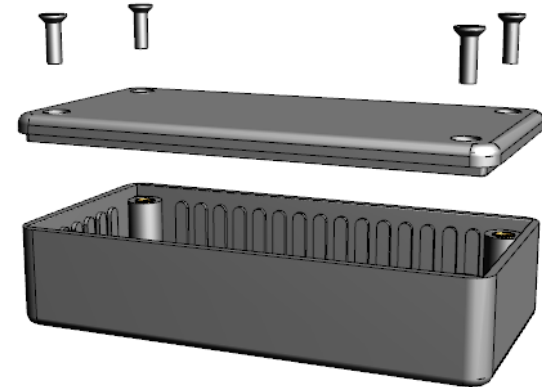


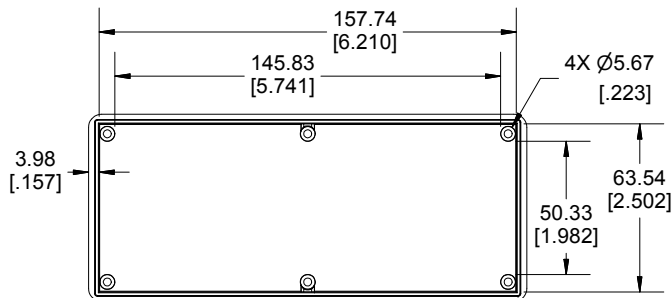
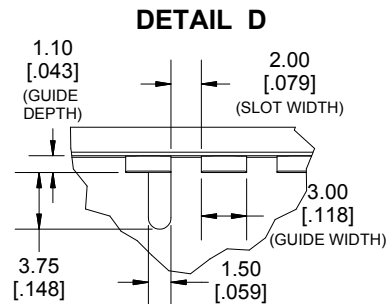
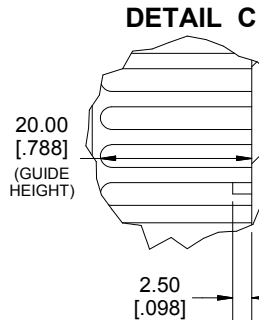
TOP VIEW



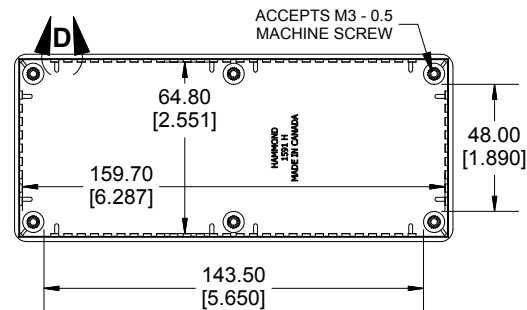
SECTION A-A



SECTION B-B
SIDE VIEW



INSIDE LID



INSIDE BOX

Dimensions:
mm
[inches]

Enclosures can be Factory Modified (Milling, Drilling, Printing etc.)
Contact Factory mjm@hammondmfg.com for quotes
Solid models of this enclosure available in STEP or IGES.

NOTE	
Purchased assembly includes box, lid, 6 cover screws, and pre installed brass inserts.	
Enclosure made from FRABS or Polycarbonate.	
Recommended Torque: 42-57 ozf.in (30-40 cN.m)	

PART NUMBERS		
1591H Enclosure		
Material	Colour	Part Number
FR ABS UL94 -V0	Beige	1591HBG
	Black	1591HBK
	Blue	1591HBU
	Grey	1591HGY
Accessories		
Plated Cover screw	M3 - 0.5 X 10mm (100Pkg)	1591MS100 (Silver) 1591MS100BK (Black)
PC Board Card Adapters		1591Z6 (6Pkg) 1591Z50 (50 Pkg) 1591Z100 (100Pkg)
	Nylon Belt / Pocket clip	1599CLIP (Black) 1599CLIPGY (Grey)
	Clear Lids - Flame Retardant Polycarbonate - Lid ONLY	1591HC

**HAMMOND
MANUFACTURING®**

1591H

www.hammondmfg.com