

ABS Plastic Multi-Purpose Enclosures w/ PC Board Standoffs 1591XX Series

Flame Retardant, General Purpose, Flanged Lid Options

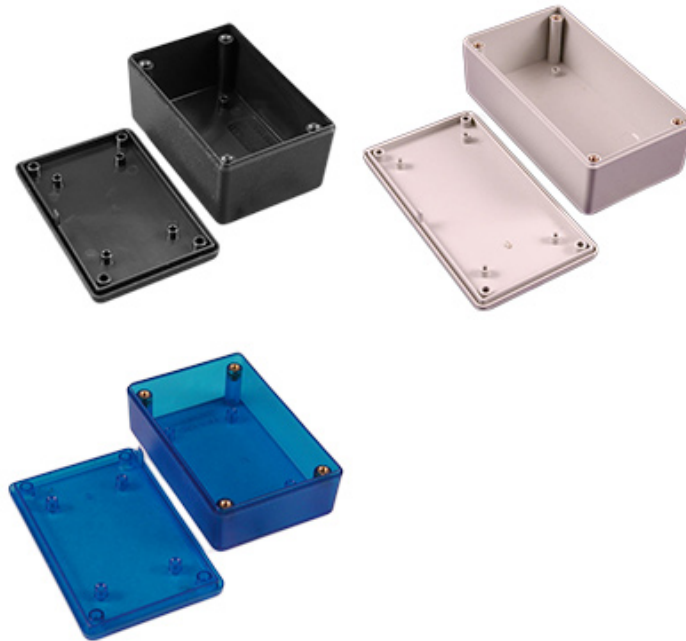


Key Features

- Ideally suited for mounting printed circuit boards horizontally.
- Internal sides of enclosure are smooth for easy connector installation except for the largest enclosure. 1591XXF. 1591XXF size is a universal type which includes P.C.board standoffs in the lid and enclosure PLUS includes card guides.
- Strong tongue and groove lid to box construction provides protection against access of dust and splashing water.
- Designed to meet IP54.
- Lid and box both contain - molded in PC board standoffs.
- Standard black and gray versions molded from easy to machine, flame retardant ABS plastic (material carries a UL flammability rating of 94V-0).
- Transparent blue and all economy versions are molded from general purpose (not flame-retardant) plastic.
- Stocked in satin texture black and grey.
- On standard versions, the lid is secured with M3 x 10 mm Phillips machine screws threaded into integral brass bushings. Perfect for applications with repetitive assembly and disassembly are required.
- Economy versions are assembled with self tapping screws into fully plastic posts.
- Black and transparent blue enclosures include black screws, gray enclosures include nickel plated screws.

Photo Features

Available in black, gray, or transparent blue. PC board mounting bosses located inside the box and lid.



Also available with mounting flanges integrated into the lid (black and gray only)

Accessory flanges are also available (sold separately from enclosures).



Enclosures Without Mounting Flanges

Flame Retardant Plastic w/ Brass Screw Inserts		General Purpose ABS w/ Brass Screw Inserts	General Purpose ABS w/ Self Tapping Screws	Length	Width	Enclosure Depth (Less Lid)
Black	Gray	Transparent Blue	Black			
1591XXMBK	1591XXMGY	1591XXMTBU	1591XXMSBK	84	56	23
1591XXLBK	1591XXLGY	1591XXLTBU	1591XXLSBK	86	56	36
1591XXABK	1591XXAGY	1591XXATBU	1591XXASBK	99	51	20
1591XXSBK	1591XXSGY	1591XXSTBU	1591XXSSBK	109	81	41
1591XXBBK	1591XXBGY	1591XXBTBU	1591XXBSBK	112	64	28
1591XXCBK	1591XXCGY	1591XXCTBU	1591XXCSBK	119	66	36
1591XXTBK	1591XXTGY	1591XXTTBU	1591XXTSBK	122	81	56
1591XXGBK	1591XXGGY	1591XXGTBU	1591XXGSBK	122	94	36
1591XXUBK	1591XXUGY		1591XXUSBK	123	123	57
1591XXDBK	1591XXDGY	1591XXDTBU	1591XXDSBK	152	81	46
1591XXEBK	1591XXEGY	1591XXETBU	1591XXESBK	193	112	56
1591XXFBK	1591XXFGY		1591XXFSBK	221	150	58

Enclosures With Mounting Flanges

Flame Retardant Plastic w/ Brass Screw Inserts		General Purpose ABS w/ Self Tapping Screws	Length	Width	Enclosure Depth (Less Lid)
Black	Gray	Black			
1591XXMFLBK	1591XXMFLGY	1591XXMSFLBK	84	56	23
1591XXLFLBK	1591XXLFLGY	1591XXLSFLBK	86	56	36
1591XXAFLBK	1591XXAFLGY	1591XXASFLBK	99	51	20
1591XXSFLBK	1591XXSFLGY	1591XXSSFLBK	109	81	41
1591XXBFLBK	1591XXBFLGY	1591XXBSFLBK	112	64	28
1591XXCFLBK	1591XXCFLGY	1591XXCSFLBK	119	66	36
1591XXTFLBK	1591XXTFLGY	1591XXTSFLBK	122	81	56
1591XXGFLBK	1591XXGFLGY	1591XXGSFLBK	122	94	36
1591XXUFLBK	1591XXUFLGY	1591XXUSFLBK	123	123	57
1591XXDFLBK	1591XXDFLGY	1591XXDSFLBK	152	81	46
1591XXEFLBK	1591XXEFLGY	1591XXESFLBK	193	112	56
1591XXFFLBK	1591XXFFLGY	1591XXFSFLBK	221	150	58

Tags: **project box**

Data subject to change without notice