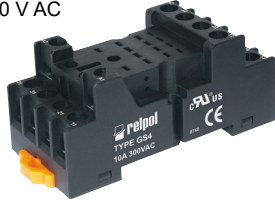


# Plug-in sockets and accessories

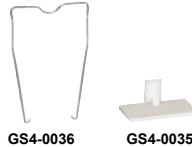
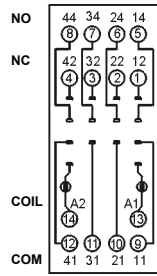
## GS4

For R4N

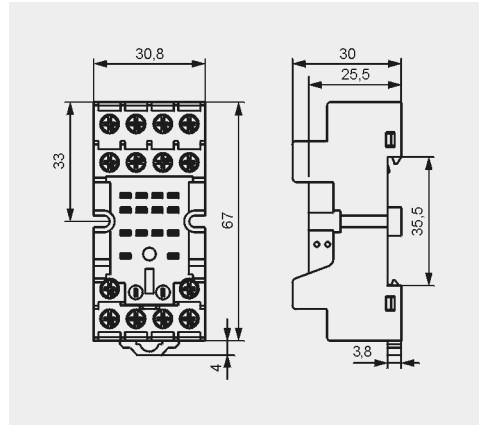
Screw terminals  
 Max. tightening moment  
 for the terminal: 0,7 Nm  
 35 mm rail mount  
 acc. to EN 60715  
 or on panel mounting  
 67 x 30,8 x 30 (~63,7) mm  
 Four poles  
 10 A, 300 V AC



## Connection diagram



## Dimensions

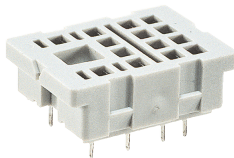


## Accessories

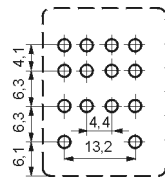
## SU4D

For R4N

For PCB  
 29,6 x 21,5 x 11 mm  
 Four poles  
 6 A, 250 V AC



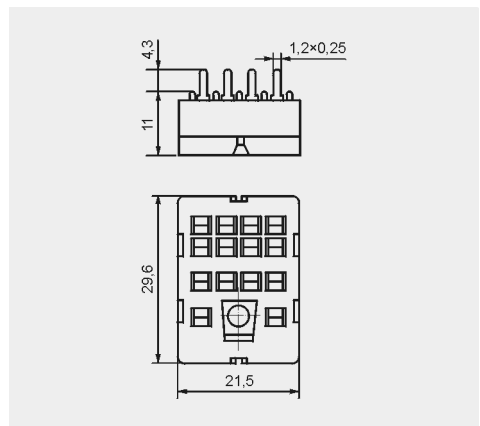
## Pinout



## Accessories

G4 1053

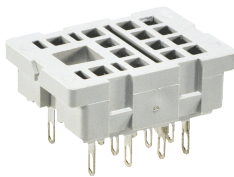
## Dimensions



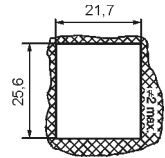
## SU4L

For R4N

Solder terminals  
 29,6 x 21,5 x 18,1 mm  
 Four poles  
 6 A, 250 V AC



## Dimensions of opening on panel mounting

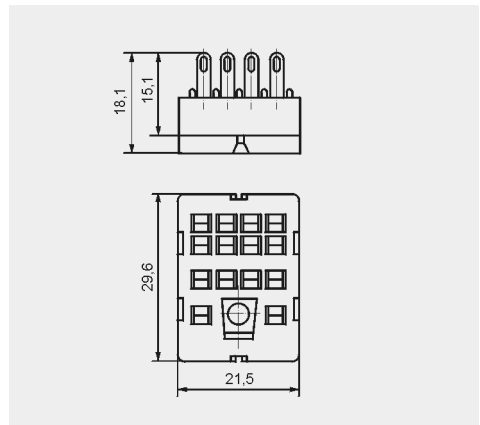


## Accessories

G4 1053

G4 1040

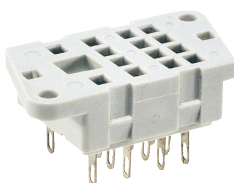
## Dimensions



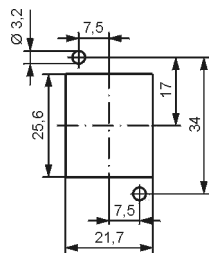
## G4

For R4N

Solder terminals  
 40,5 x 21,5 x 18,1 mm  
 Four poles  
 6 A, 250 V AC



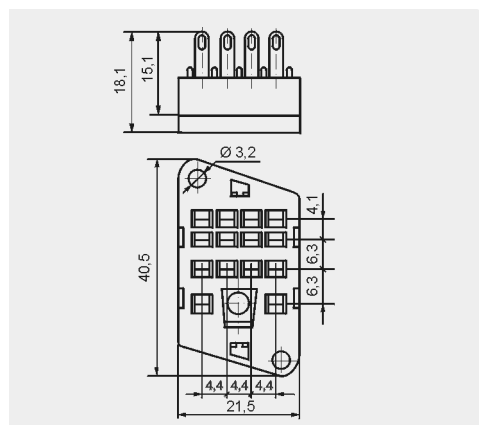
## Pinout of openings on panel mounting



## Accessories

G4 1053

## Dimensions



⚠ In the bracket the height of socket with spring wire clip is shown.