

AK4191/..KD-2.5-PEBBLE GREY



A Phoenix Mecano Brand

- 1- to n-poles

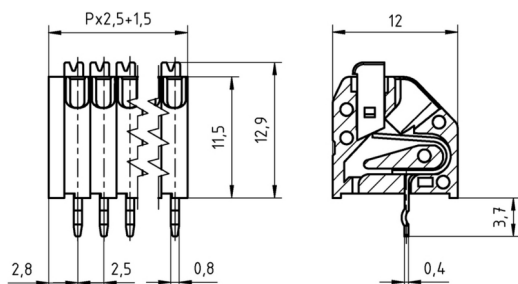
Technical Data

Wire sizes		Insulating Material	
Solid min	0.14 mm ²	Material	PA 6.6
Solid max	0.75 mm ²	Flammability Class	UL 94 V-0
Stranded (flexible) min	0.14mm ²	Temperatures	
Stranded (flexible) max	0.75 mm ²	Operating Temperature (without mech. load)	-40 °C - 105 °C
Stranded with Ferrule min	0.14 mm ²	Store Temperature	-40 °C - 105 °C
Stranded with Ferrule max	0.34 mm ²	Wave Soldering Process	
Dimensions		Soldering Temperature, recommended	260 °C
Stripped Length	9.0 mm	Peak Soldering Time, recommended	3-4 s
PCB Hole Diameter	1.2 mm	Reflow Process	
Materials		Soldering Temperature, recommended	-
Contact Pin	Bronze	Peak Soldering Time, recommended	-

Colours

	PEBBLE GREY, RAL 7032
	ORANGE, RAL 2011
	BLUE, RAL 5015
	LIGHT GREEN, similar RAL 6018

Colours according to RAL, there may be variations on colour due to production conditions. Special colours on request.



Order Data (Spacing 2.5 mm)

Poles	Width (mm)	Article Designation	Article Number	PU
1	4.00	AK4191/1KD-2.5-PEBBLE GREY	54191010001 G	250
2	6.50	AK4191/2KD-2.5-PEBBLE GREY	54191020001 F	200
3	9.00	AK4191/3KD-2.5-PEBBLE GREY	54191030001 F	200
4	11.50	AK4191/4KD-2.5-PEBBLE GREY	54191040001 F	200
5	14.00	AK4191/5KD-2.5-PEBBLE GREY	54191050001 E	100
6	16.50	AK4191/6KD-2.5-PEBBLE GREY	54191060001 E	100
7	19.00	AK4191/7KD-2.5-PEBBLE GREY	54191070001 E	100
8	21.50	AK4191/8KD-2.5-PEBBLE GREY	54191080001 D	50
9	24.00	AK4191/9KD-2.5-PEBBLE GREY	54191090001 D	50
10	26.50	AK4191/10KD-2.5-PEBBLE GREY	54191100001 D	50
11	29.00	AK4191/11KD-2.5-PEBBLE GREY	54191110001 D	50
12	31.50	AK4191/12KD-2.5-PEBBLE GREY	54191120001 D	50

Accessoires

Figure	Designation	Article Number
	Spacer SPC-AK4191-PEBBLE GREY	Order Data: 54191000000

Ratings

UseGroup	cRU [®] US			VDE	
	B	C	D		
Rated Voltage	150 V	-	150 V	130 V	
Rated Current	2 A	-	2 A	2 A	
Rated Wire Size				min	max
- solid	AWG 26-20	-	AWG 26-20	0.2 mm ²	0.75 mm ²
- stranded	AWG 26-20	-	AWG 26-20	0.2 mm ²	0.75 mm ²
Test Voltage	1.30 kV	-	1.30 kV	1.25 kV	