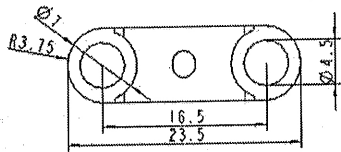
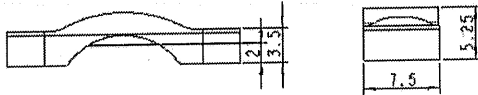
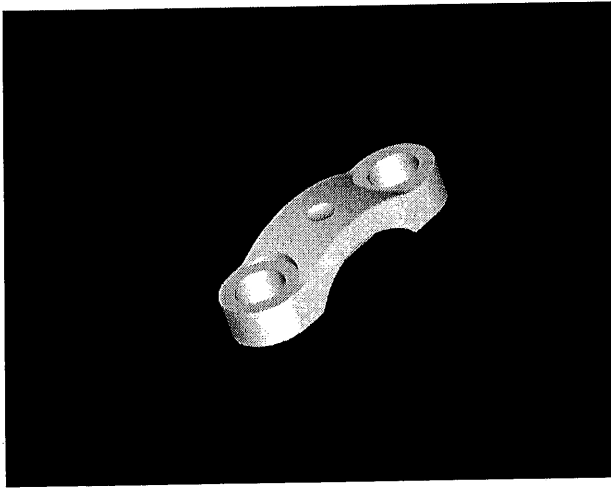


Datenblatt / Datasheet



Zugentlastungsschelle, Lochabstand 16,5 mm,
Lochdurchmesser 4,5 mm

*Cord Grip, Hole Distance 16,5 mm,
Hole 4,5 mm*

Typ:
Type:

Nennspannung: —
Rated voltage:

Nennstrom: —
Rated current:

Bauart: —
According to:

Schutzart: —
IP-Code

Anschlüsse: —
Type of Terminals:

Kontakte: —
Material of Terminals:

Kontaktträger: —
Carrying parts:

Gehäuse: Polyamid 6 30GF
Cover: polyamide

Approbationen: —
Certified by:

Anmerkung: —
Annotation: