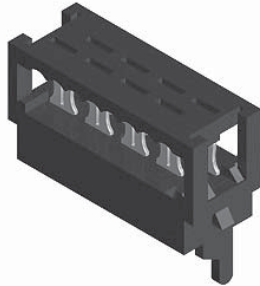


PIN HEADER IDC 1,27 mm

ID: 372

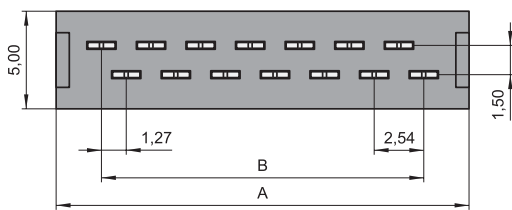
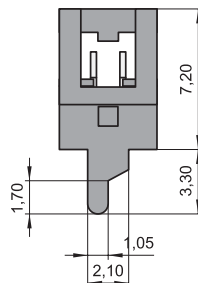
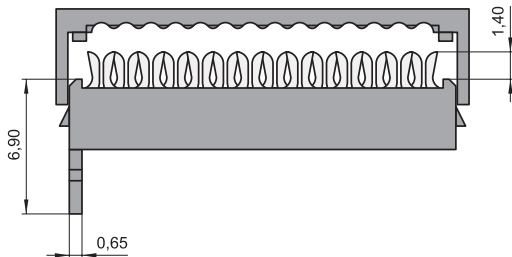
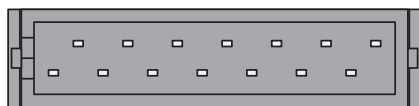
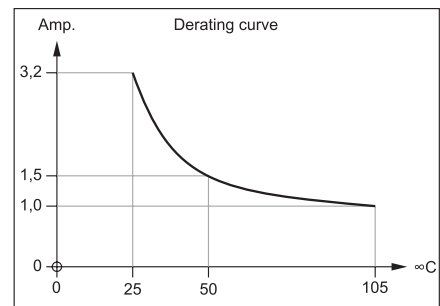
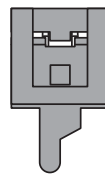
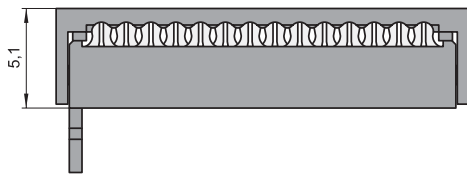
STL 2/15-0510IDC

Series 640



TECHNICAL DATA

Pitch	1,27 mm
Insulating Material	high temp. thermoplast UL94V-0
Contact Material	phosphor bronze
Rated Current	1 Amp.
Rated Voltage	230 V _{AC/DC}
Withstanding Voltage	500 V _{AC} for one minute
Operating Temperature	-40°C to +105°C
Suitable for termination with AWG 28 [0.08 - 0.09 mm ²] flat ribbon cable	



No. of contacts	Dimensions	
	A	B
4	8,45	3,81
6	10,99	6,35
8	13,53	8,89
10	16,07	11,43
12	18,61	13,97
14	21,15	16,51
16	23,69	19,05
18	26,23	21,59
20	28,77	24,13
22	31,31	26,67
24	33,85	29,21
26	36,39	31,75

All dimensions in mm.
Other dimensions upon request.

STL 2/15 - 0510 IDC - C - TT - XX TR U

- 2: 2 rows, pitch 1,27mm
- 0510: mounting height 5,1mm
- C: covered
- TT: Sn
- XX: RoHS - compliant with high temp. plastic
- TR: Tape&Reel packing (please ask for details before ordering)
- U: Poles: 4 - 26 contacts