



G-Sicherungshalter
für Kleinstsicherungen
8,4 x 7,6 mm

Fuse-holders
for sub-miniature fuses
8.4 x 7.6 mm

Porte-fusibles
pour fusibles sub-miniatures
8,4 x 7,6 mm



Bemess'spannung 250 V
Bemessungsstrom 6,3 A

Rated voltage 250 V
Rated current 6.3 A

Tension nominale 250 V
Courant nominal 6,3 A

Montage
Leiterplatte
Stiftabstand 5,08 mm

Mounting
Printed circuit board
Pin distance 5.08 mm

Montage
Circuit imprimé
Distance des broches
5,08 mm
Trou Ø 1 mm

Bohrungen 1 mm Ø

Hole Ø 1 mm

Anschlüsse
Lötbar

Connections
Solder

Connexions
À souder

(für Kleinstsicherungen mit
kurzen Anschlußstiften)

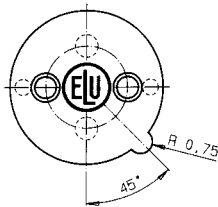
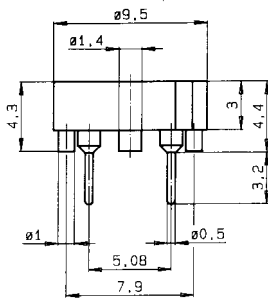
(for sub-miniature fuses
with short pins)

(pour fusibles subminiatures
avec pattes courtes)

Approbation(en)
-

Approval(s)
-

Homologation(s)
-



Type

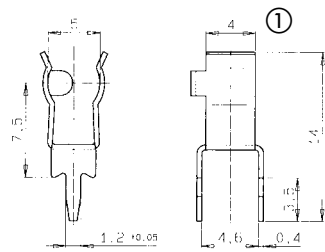
166602



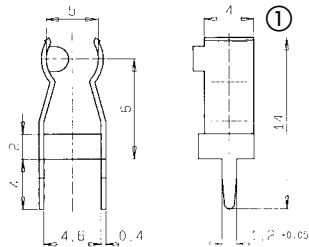
G-Sicherungshalter
für G-Sicherungseinsätze
mit 5 + 6,3 mm Kappen-Ø

Fuse-clips
for fuse-links
with 5 + 6.3 mm cap Ø

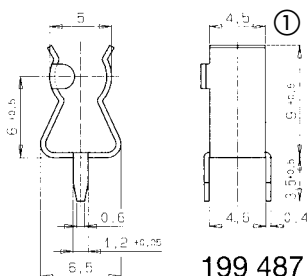
Porte-fusibles
pour fusibles cartouches
avec 5 + 6,3 mm capsule Ø



199 073



199 207



199 487

Bemess'spanng. max. 500 V
① Bemessungsstrom 6,3 A
Ø 5 mm
② Bemessungsstrom 10 A
Ø 6,3 mm

Rated voltage max. 500 V
Rated current 6.3 A
Ø 5 mm
Rated current 10 A
Ø 6.3 mm

Tension nom. max. 500 V
Courant nominal 6,3 A
Ø 5 mm
Courant nominal 10 A
Ø 6,3 mm

Montage
Leiterplatte
Material
Messing, verzinkt
Anschlüsse
Lötbar

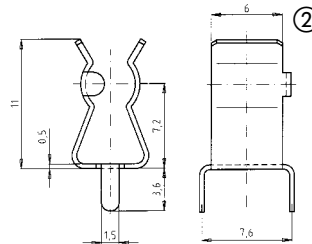
Mounting
Printed circuit board
Material
Brass, tinned
Connections
Solder

Montage
Circuit imprimé
Matériau
Laiton, étamé
Connexions
À souder

Andere Typen auf Anfrage
(z. B. gegurtet für autom.
Leiterplattenbestückung)

Other types on request
(e. g. on tape for automatic
insertion to PCB)

Autres types sur demande
(p. e. sur bande pour
assemblage automat.)



199 429

Type

199073
199207
199429
199487