

High performance

This range provides a high level of performance within compact metal enclosures for printed circuit board configurations.

Specifically designed to protect against symmetric, assymmetric, periodic and pulse shaped RFI.

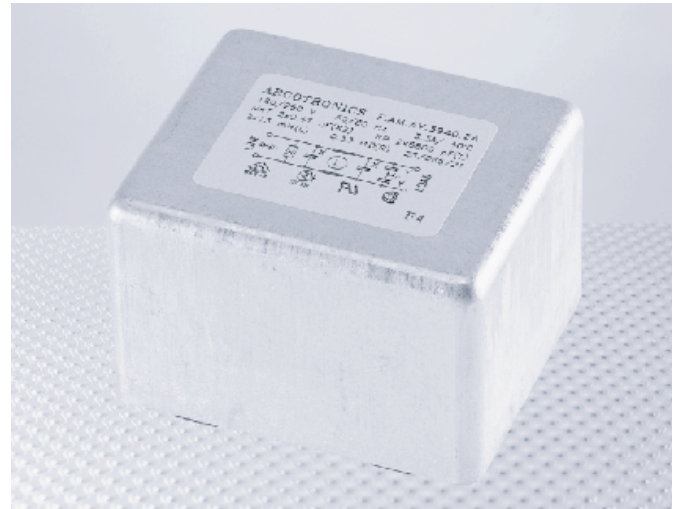
Ideal for use with office equipment, telecom products, computers and industrial applications.

- Current ratings from 3A to 16A
- PCB mount termination
- High RFI attenuation
- Single or two stage circuit designs
- Medical versions available

Mechanical Specifications

Manufacture: metal case sealed with self-extinguishing resin.

Connections: for PCB mounting;
ground terminal connected to case.



Electrical Specifications

Rated voltage (V_R): max 250 V, 50/60 Hz

Rated current (I_R): referred to room temperature = 40°C

Leakage current (I_L): at 220 V, 50 Hz, max value

Voltage test (2s.): line to ground 3000 Vdc or 1800 Vac
line to line 1700 Vdc

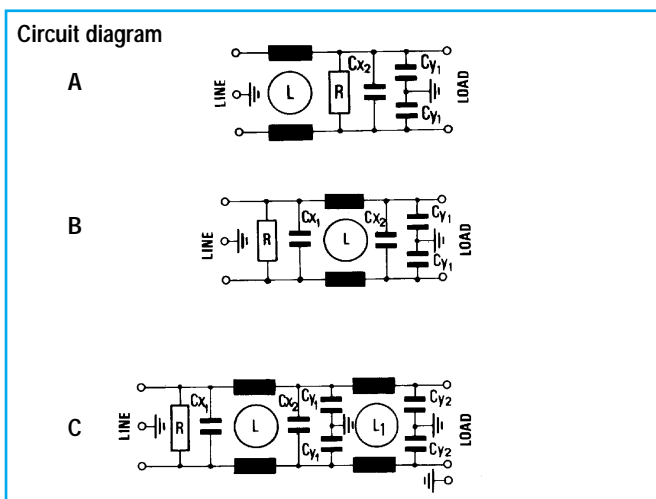
Climatic category: HPF (25/085/21):

Temperature range: -25°C to +85°C

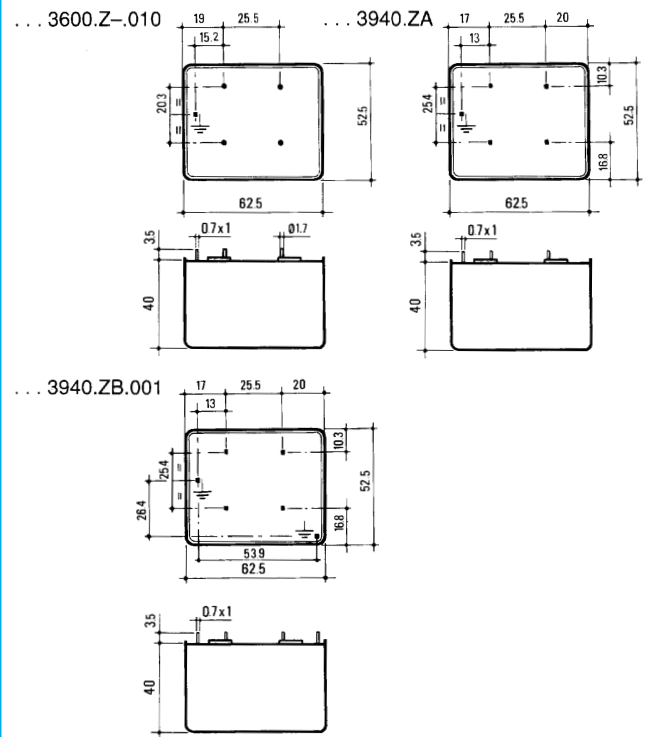
Filter Range

Code	I_R (A)	L (mH)	L_1 (mH)	C_{X1} (uF)	C_{X2} (uF)	C_{Y1} (pF)	C_{Y2} (pF)	L (mA)	R (M Ω)	Circ diag
F.AM.AV.3600.ZC.010	16	2x1		0.6		2x2500		2x0.23	1	A
▲ F.AM.AV.3600.ZI.010	16	2x1		0.6		2x6800		2x0.62	1	A
F.AM.AV.3940.ZA	3.3	2x13		0.47	0.47	2x6800		2x0.62	0.33	B
F.AM.AV.3940.ZB.001	3.3	2x13	2x1	0.47	0.47	2x6800	2x1000	2x0.72	0.68	C

▲ UL approval only



Dimensions (mm) and connections



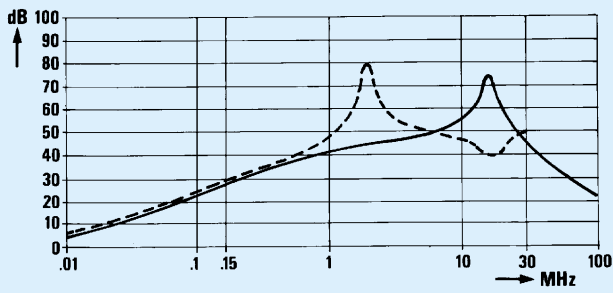
Approvals



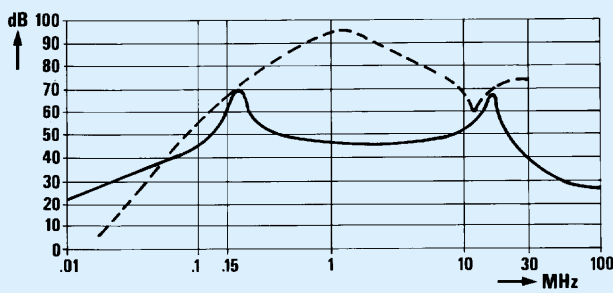
PCB Mount Filters

F.AM.AV series

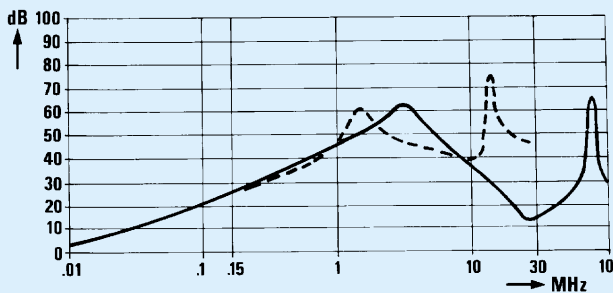
Insertion loss (typical): — Asymmetrical (line to ground) - - - Symmetrical (line to line)



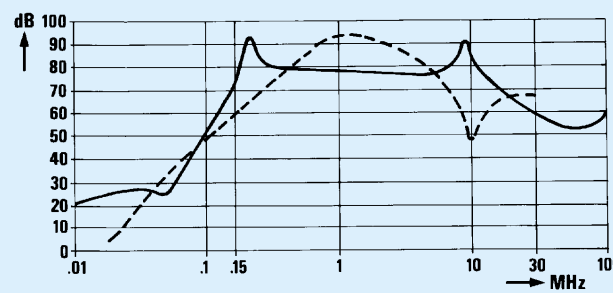
...3600.ZC.010



...3940.ZA



...3600.ZI.010



...3490.ZB.001