

# C.T.C. Coils Limited 確力新實業有限公司

香港新界大埔汀角路55號太平工業中心2座8字樓E室

Flat E, 8/F, Block 2, Tai Ping Ind. Centre, 55 Ting Kok Rd., Tai Po., N.T., Hong Kong

Tel : (852) 2695-4889 Fax : (852) 2695-1842

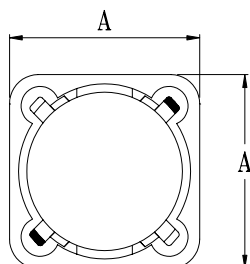
http://www.ctccoils.com E-mail : enquiry@ctccoils.com

## SPECIFICATION FOR:

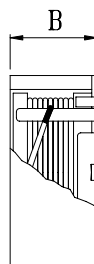
( ) REF. :

### SMFS1270-Series

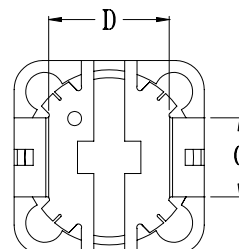
Part Number	Inductance (uH)	Tolerance	Test Freq. of L	DCR ( $\Omega$ max)	IDC (A)
SMFS1270-550601-T	1.2	+40%/-20%	100KHz/1.0V	0.0070	9.80
SMFS1270-550602-T	2.4	+40%/-20%	100KHz/1.0V	0.0115	8.0
SMFS1270-550603-T	3.5	+40%/-20%	100KHz/1.0V	0.0135	7.5
SMFS1270-550604-T	4.7	+40%/-20%	100KHz/1.0V	0.0158	6.8
SMFS1270-550605-T	6.1	+40%/-20%	100KHz/1.0V	0.0176	6.6
SMFS1270-550606-T	7.6	+40%/-20%	100KHz/1.0V	0.0200	5.90
SMFS1270-550607-T	10	$\pm 20\%$	1KHz/1.0V	0.0216	5.40
SMFS1270-550608-T	12	$\pm 20\%$	1KHz/1.0V	0.0243	4.90
SMFS1270-550609-T	15	$\pm 20\%$	1KHz/1.0V	0.0270	4.50
SMFS1270-550610-T	18	$\pm 20\%$	1KHz/1.0V	0.0392	3.90
SMFS1270-550611-T	22	$\pm 20\%$	1KHz/1.0V	0.0432	3.60
SMFS1270-550612-T	27	$\pm 20\%$	1KHz/1.0V	0.0459	3.40
SMFS1270-550613-T	33	$\pm 20\%$	1KHz/1.0V	0.0648	3.00
SMFS1270-550614-T	39	$\pm 20\%$	1KHz/1.0V	0.0729	2.75
SMFS1270-550615-T	47	$\pm 20\%$	1KHz/1.0V	0.10	2.50
SMFS1270-550616-T	56	$\pm 20\%$	1KHz/1.0V	0.11	2.35
SMFS1270-550617-T	68	$\pm 20\%$	1KHz/1.0V	0.14	2.10
SMFS1270-550618-T	82	$\pm 20\%$	1KHz/1.0V	0.16	1.95
SMFS1270-550619-T	100	$\pm 20\%$	1KHz/1.0V	0.22	1.70
SMFS1270-550620-T	120	$\pm 20\%$	1KHz/1.0V	0.25	1.60
SMFS1270-550621-T	150	$\pm 20\%$	1KHz/1.0V	0.28	1.42
SMFS1270-550622-T	180	$\pm 20\%$	1KHz/1.0V	0.35	1.30
SMFS1270-550623-T	220	$\pm 20\%$	1KHz/1.0V	0.39	1.16
SMFS1270-550624-T	270	$\pm 20\%$	1KHz/1.0V	0.56	1.06
SMFS1270-550625-T	330	$\pm 20\%$	1KHz/1.0V	0.64	0.95
SMFS1270-550626-T	390	$\pm 20\%$	1KHz/1.0V	0.70	0.88
SMFS1270-550627-T	470	$\pm 20\%$	1KHz/1.0V	0.98	0.79
SMFS1270-550628-T	560	$\pm 20\%$	1KHz/1.0V	1.07	0.73
SMFS1270-550629-T	680	$\pm 20\%$	1KHz/1.0V	1.46	0.67
SMFS1270-550630-T	820	$\pm 20\%$	1KHz/1.0V	1.64	0.60
SMFS1270-550631-T	1000	$\pm 20\%$	1KHz/1.0V	1.82	0.55



A : 12.3  $\pm$  0.3mm



B : 8.0mm Max



C : 5.0mm Ref

D:7.6mm Ref

