

Talema Elektronik GmbH

Semdbnerstr.5, Postfach 2523, 82110, Germering.

Tel : ++49 89 841 00-0,

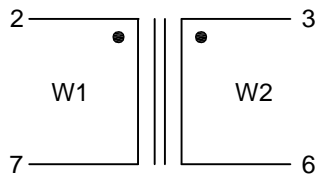
Fax : ++49 89 841 00 25

Email : info@talema.de



Customer	Schukat	Page : 1 of 1
Product	Current Compensated Choke	
Part No	21322	Date : 16th Feb '10
Customer Part No	Equiv. to 42V30 20 00	

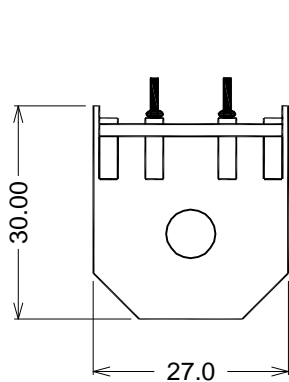
SCHEMATIC:



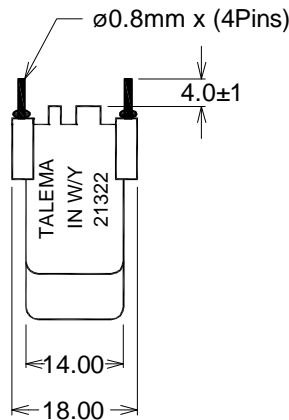
ELECTRICAL SPECIFICATIONS @25°C:

- 1) Lo / Wdg = 5.60 mH +50%, -30% @10KHz/0.1mA
- 2) DCR / Wdg = 120 mOhms (Typ)
- 3) Turns Ratio W1 : W2 = 1 : 1
- 4) H.V. Test:
Wdg - Wdg = 1.5KVrms / 50Hz / 2sec
- 5) Voltage = 250Vac
- 6) Rated current = 2.0A - referred to 250V-50Hz
- and +60° ambient temperature
- 7) Climatic category = DIN GKC (-40° to +125°C; Humidity cat. C)

MECHANICAL SPECIFICATIONS:

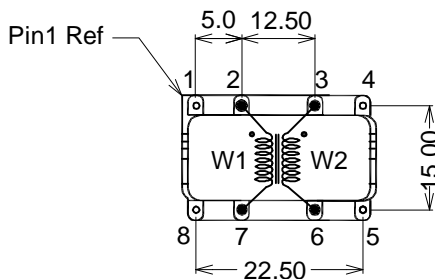


Front View



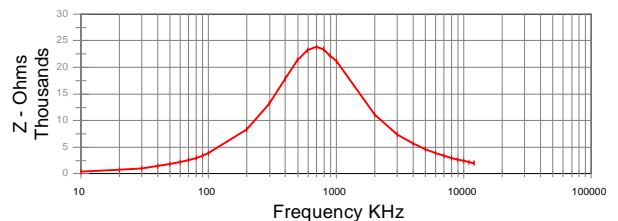
Side View

Case accordance with UL94-V0



Pin View

Impedance Curve



Unit : mm

Pin pitch tolerance : ±0.2mm

	Rev.	Description	Date	Name
	3			
	2			
	1	Pin size has been changed to ø0.8mm instead of 0.6x0.88mm	04.06.2009	K.Veerappan
	0	Initial issue	15.04.2009	K.Veerappan
DRAFT COPY		ISSUE : 1	REV : 1	