

Schematic



## TECHNICAL DATA :

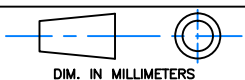
- Core : toroid Ø25 / Ø15 / H10  $\mu$ i 6000 ferrite material or equivalent
- Wire : Ø0.40 grade 1 class F or equivalent
- Rated current per winding : 1.5A referred to 250V-50Hz and +60°C ambient temperature
- Rated inductance per winding : 27mH +50% -30% at 10KHz ; 50mV
- Test voltage between windings : 1500VAC - 50Hz / 2 sec
- Climatic category : DIN GKC (-40 to +125°C; humidity cat. C)
- Case material : PBT at 30% fibreglass UL94-V0 or equivalent

RoHS compliance

Please, refer to general catalog for unspecified parameters

a	
IND	DATE

## Radiohm Specification



Designation : 42V32 1501

Part number : \_\_\_\_\_

Date : 07/11/2019

Preliminary :

Final :

Checked by: Sami NCIRI

## Customer Specification Approval

Part number : \_\_\_\_\_

Signature : \_\_\_\_\_

Name : \_\_\_\_\_

Title : \_\_\_\_\_

Date : \_\_\_\_\_