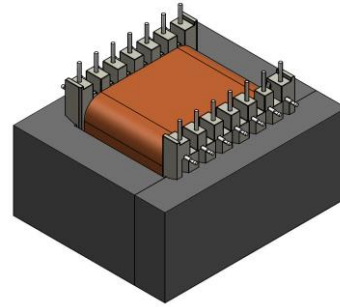
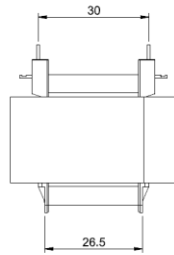
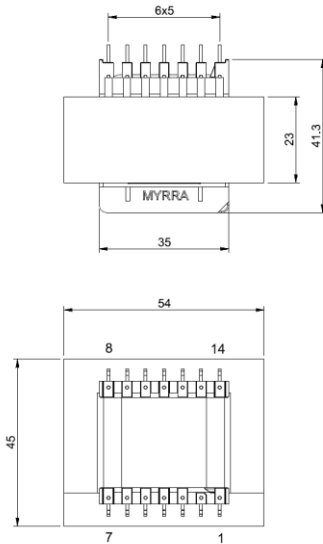


Product PASSIVE PFC	Size EI54-23	Type OPEN
Product designation		

PASSIVE PFC CHOKES - EI54x23 - OPEN

I MECHANICAL CHARACTERISTICS - PINOUT



Terminals	
Pins	Ø 0.80 +/- 0.1 mm
PCB recommended drilling diameter	1.3 mm
Pins length	4.0 +/- 0.5 mm
Missing pin	None
Tolerances	
General tolerance	+/- 0.5 mm
Pins pitch tolerance	+/- 0.5 mm
Pins row tolerance	+/- 0.5 mm

II ELECTRICAL CHARACTERISTICS - ENVIRONMENTAL

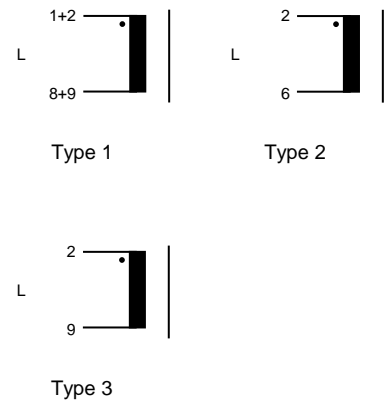
Typical use at ambient 70 °C

Reference	Inductance (mH)	Rated current (A _{RMS})	Sat. current (A _{pk})	Temperature class	Type
43550	1.0	7.7	21.5	T70 / F	1
43551	1.5	6.3	17.0	T70 / F	1
43552	2.0	5.5	14.3	T70 / F	2
43553	2.5	5.4	13.5	T70 / F	2
43554	3.0	5.1	12.4	T70 / F	2
43555	3.5	4.5	10.8	T70 / F	2
43556	4.0	4.1	9.6	T70 / F	2
43557	4.5	3.9	9.2	T70 / F	3
43558	5.0	3.9	9.0	T70 / F	3
43559	10.0	3.0	6.9	T70 / F	2
43560	15.0	2.5	5.7	T70 / F	2
43561	20.0	2.0	4.6	T70 / F	3

Operating temperature - 40 / + 140 °C
Storage temperature - 40 / + 85 °C

Rated currents (A_{RMS}) will give temperature rising of 60 K.

Saturation currents (A_{pk}) are stated for a maximum inductance drop of 20%



III SAFETY - APPROVAL

RoHS and REACH compliant

UL94 V-0 materials

Construction conforms to the certified MYRRA Class F UL Electrical Insulation System E113497-F5.

Compliant with IEC61558-2-20