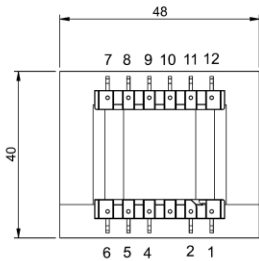
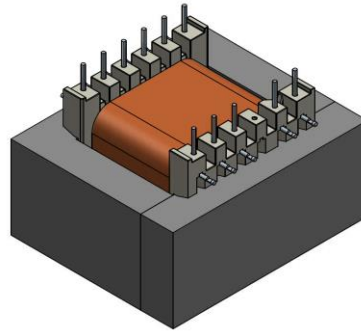
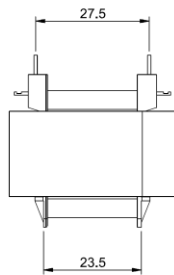
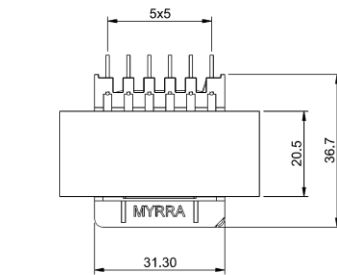


Product <b>PASSIVE PFC</b>	Size <b>EI48-20.5</b>	Type <b>OPEN</b>
-------------------------------	--------------------------	---------------------

Product designation

## PASSIVE PFC CHOKES - EI48x20.5 - OPEN

### I MECHANICAL CHARACTERISTICS - PINOUT

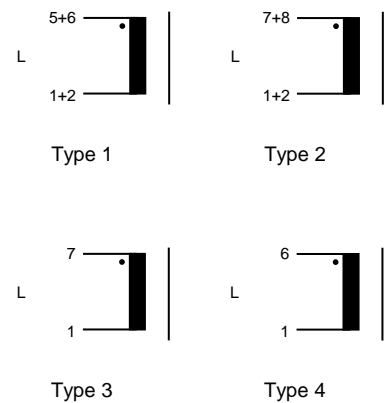


Terminals	
Pins	Ø 0.80 +/- 0.1 mm
PCB recommended drilling diameter	1.3 mm
Pins length	4.0 +/- 0.5 mm
Missing pin	position 3
Tolerances	
General tolerance	+/- 0.5 mm
Pins pitch tolerance	+/- 0.5 mm
Pins row tolerance	+/- 0.5 mm

### II ELECTRICAL CHARACTERISTICS - ENVIRONMENTAL

Typical use at ambient 70 °C

Reference	Inductance (mH)	Rated current (A <sub>RMS</sub> )	Sat. current (A <sub>pk</sub> )	Temperature class	Type
43450	1.0	7.9	16.2	T70 / F	1
43451	1.5	7.3	12.6	T70 / F	2
43452	2.0	6.0	10.6	T70 / F	3
43453	2.5	5.0	9.6	T70 / F	4
43454	3.0	5.0	8.1	T70 / F	4
43455	3.5	4.2	7.8	T70 / F	4
43456	4.0	3.9	7.1	T70 / F	4
43457	4.5	3.9	6.8	T70 / F	4
43458	5.0	3.9	6.8	T70 / F	4
43459	10.0	2.7	6.2	T70 / F	3
43460	15.0	2.3	4.1	T70 / F	4
43461	20.0	2.0	2.9	T70 / F	4



Operating temperature - 40 / + 140 °C  
Storage temperature - 40 / + 85 °C

Rated currents (A<sub>RMS</sub>) will give temperature rising of 60 K.

Saturation currents (A<sub>pk</sub>) are stated for a maximum inductance drop of 20%

### III SAFETY - APPROVAL

RoHS and REACH compliant

UL94 V-0 materials

Construction conforms to the certified MYRRA Class F UL Electrical Insulation System E113497-F5.

Compliant with IEC61558-2-20