

## ABS Plastic Project Enclosures *RL Series*

### Shallow Lid

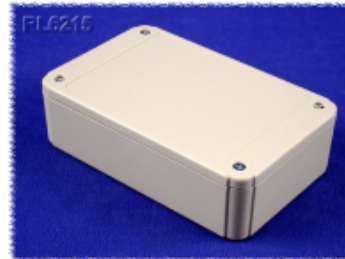


#### Key Features

- Designed to house P.C. boards for hand-held use or wall mount.
- Molded in light grey or black general purpose ABS plastic with a light texture.
- Two part construction. Both halves include smooth recessed area for membrane, label or silkscreen (see chart below for recess size).
- P.C. board standoffs are molded into both halves of the enclosure (see photo tables for details).
- Designed to meet IP54.
- All sizes also available in a flanged lid version.
- Includes four M2.6 assembly screws.



#### Photos



Available in black or gray, and with or without mounting flanges. Includes lid and PC board screws.

No Flanges	With Flanges	Color	Length	Width	Depth (with lid)	Lid Recess Size	Bottom Recess Size	PCB Mounting Dim	Wall Mount Dim (flanged lid only)
RL6105BK	RL6105-FBK	Black	80	60	30	2.13 x 2.05	2.13 x 2.05	2.52 x 1.18	92
RL6105	RL6105-F	Grey	80	60	30	2.13 x 2.05	2.13 x 2.05	2.52 x 1.18	92
RL6115BK	RL6115-FBK	Black	80	60	40	2.13 x 2.05	2.13 x 2.05	2.52 x 1.18	92
RL6115	RL6115-F	Grey	80	60	40	2.13 x 2.05	2.13 x 2.05	2.52 x 1.18	92
RL6165BK	RL6165-FBK	Black	105	65	30	3.11 x 2.24	3.11 x 2.24	3.5 x 1.38	129
RL6165	RL6165-F	Grey	105	65	30	3.11 x 2.24	3.11 x 2.24	3.5 x 1.38	129
RL6175BK	RL6175-FBK	Black	105	65	40	3.11 x 2.24	3.11 x 2.24	3.5 x 1.38	129
RL6175	RL6175-F	Grey	105	65	40	3.11 x 2.24	3.11 x 2.24	3.5 x 1.38	129
RL6215BK	RL6215-FBK	Black	125	80	35	3.78 x 2.76	3.78 x 2.76	4.21 x 1.57	137
RL6215	RL6215-F	Grey	125	80	35	3.78 x 2.76	3.78 x 2.76	4.21 x 1.57	137
RL6225BK	RL6225-FBK	Black	125	80	50	3.78 x 2.76	3.78 x 2.76	4.21 x 1.57	137
RL6225	RL6225-F	Grey	125	80	50	3.78 x 2.76	3.78 x 2.76	4.21 x 1.57	137
RL6335BK	RL6335-FBK	Black	125	100	60	3.78 x 3.46	3.78 x 3.46	4.17 x 2.56	137
RL6335	RL6335-F	Grey	125	100	60	3.78 x 3.46	3.78 x 3.46	4.17 x 2.56	137
RL6365BK	RL6365-FBK	Black	125	100	90	3.78 x 3.46	3.78 x 3.46	4.17 x 2.56	137
RL6365	RL6365-F	Grey	125	100	90	3.78 x 3.46	3.78 x 3.46	4.17 x 2.56	137
RL6435BK	RL6435-FBK	Black	150	100	60	4.72 x 3.54	4.72 x 3.54	5.20 x 2.36	162
RL6435	RL6435-F	Grey	150	100	60	4.72 x 3.54	4.72 x 3.54	5.20 x 2.36	162
RL6465BK	RL6465-FBK	Black	150	100	90	4.72 x 3.54	4.72 x 3.54	5.20 x 2.36	162
RL6465	RL6465-F	Grey	150	100	90	4.72 x 3.54	4.72 x 3.54	5.20 x 2.36	162
RL6555BK	RL6555-FBK	Black	175	125	70	5.59 x 4.53	5.59 x 4.53	6.06 x 2.76	187
RL6555	RL6555-F	Grey	175	125	70	5.59 x 4.53	5.59 x 4.53	6.06 x 2.76	187
RL6585BK	RL6585-FBK	Black	175	125	100	5.59 x 4.53	5.59 x 4.41	6.06 x 2.76	187
RL6585	RL6585-F	Grey	175	125	100	5.59 x 4.53	5.59 x 4.41	6.06 x 2.76	187
RL6655BK	RL6655-FBK	Black	200	150	70	6.50 x 5.31	6.50 x 5.31	7.01 x 3.94	165
RL6655	RL6655-F	Grey	200	150	70	6.50 x 5.31	6.50 x 5.31	7.01 x 3.94	165
RL6685BK	RL6685-FBK	Black	200	150	100	6.50 x 5.31	6.50 x 5.31	7.01 x 3.94	165

No Flanges	With Flanges	Color	Length	Width	Depth (with lid)	Lid Recess Size	Bottom Recess Size	PCB Mounting Dim	Wall Mount Dim (flanged lid only)
RL6685	RL6685-F	Grey	200	150	100	6.50 x 5.31	6.50 x 5.31	7.01 x 3.94	165

*Data subject to change without notice*

© 2019. Hammond Manufacturing Ltd. All rights reserved.