



TS79L00 series

3-Terminal Low Current Negative Voltage Regulator

TO-92



SOT-89



SOP-8



Voltage Range - 5V to - 24V
Output Current up to 100mA

General Description

The TS79L00 Series of negative voltage regulators are inexpensive, easy-to-use devices suitable for a multitude of applications that require a regulated supply of up to 100mA. Like their higher power TS7900 and TS79M00 Series cousins, these regulators feature internal current limiting and thermal shutdown making them remarkably rugged. No external components are required with the TS79L00 devices in many applications.

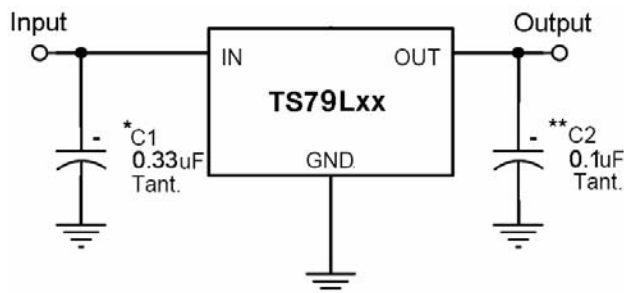
These devices offer a substantial performance advantage over the traditional zener diode-resistor combination, as output impedance and quiescent current are substantially reduced.

This series is offered in 3-pin TO-92, SOT-89 and 8-pin SOP-8 package.

Features

- ◇ Output current up to 100mA
- ◇ No external components required
- ◇ Internal thermal overload protection
- ◇ Internal short-circuit current limiting
- ◇ Output transistor safe-area compensation
- ◇ Output voltage offered in 4% tolerance

Standard Application



A common ground is required between the input and the output voltages. The input voltage must remain typically 2.0V above the output voltage even during the low point on the Input ripple voltage.

XX = these two digits of the type number indicate voltage.

* = C_{in} is required if regulator is located an appreciable distance from power supply filter.

** = C_o is not needed for stability; however, it does improve transient response.

Ordering Information

Part No.	Operating Temp. (Ambient)	Package
TS79LxxCT	-20 ~ +85 °C	TO-92
TS79LxxCY		SOT-89
TS79LxxCS		SOP-8

Note: Where xx denotes voltage option.

Pin Assignment

Pin No.			Pin Description
TS79L00CT	TS79L00CY	TS79L00CS	
3	3	1	Output
2	2	2, 3, 6, 7	Input
1	1	5	Ground
		4, 8	Non connected



Absolute Maximum Rating			
Input Voltage		V _{in} *	- 35 V
Input Voltage		V _{in} **	- 40 V
Power Dissipation	TO-92	P _d	0.625 W
	TO-89		0.5 W
	SOP-8		0.5 W
Operating Junction Temperature Range		T _J	0 ~ +125 °C
Storage Temperature Range		T _{STG}	-65 ~ +150 °C
Note : * TS79L05 to TS79L18 ** TS79L24			

TS79L05 Electrical Characteristics						
(V _{in} = -10V, I _{out} =40mA, 0 °C ≤ T _J ≤ 125 °C, C _{in} =0.33uF, C _{out} =0.1uF; unless otherwise specified.)						
Parameter	Symbol	Test Conditions	Min	Typ	Max	Unit
Output voltage	V _{out}	T _J =25 °C	- 4.80	- 5	- 5.20	V
		-7.5V ≤ V _{in} ≤ -20V, 5mA ≤ I _{out} ≤ 100mA	- 4.75	- 5	- 5.25	
Line Regulation	REG _{line}	T _J =25 °C -7.5V ≤ V _{in} ≤ -20V, I _o =40mA	--	50	150	mV
Load Regulation	REG _{load}	T _J =25 °C 5mA ≤ I _{out} ≤ 100mA 5mA ≤ I _{out} ≤ 40mA	--	20 10	60 30	
Quiescent Current	I _q	I _{out} =0, T _J =25 °C	--	3	6	mA
Quiescent Current Change	ΔI _q	-8V ≤ V _{in} ≤ -20V	--	--	1.5	
		1mA ≤ I _{out} ≤ 40mA	--	--	0.1	
Output Noise Voltage	V _n	10Hz ≤ f ≤ 100KHz, T _J =25 °C	--	40	--	uV
Ripple Rejection Ratio	RR	f=120Hz, -8V ≤ V _{in} ≤ -18V	41	49	--	dB
Voltage Drop	V _{drop}	T _J =25 °C	--	1.7	--	V
Peak Output Current	I _{o peak}	T _J =25 °C	--	0.15	--	A

- Pulse testing techniques are used to maintain the junction temperature as close to the ambient temperature as possible, and thermal effects must be taken into account separately.
- This specification applies only for DC power dissipation permitted by absolute maximum ratings.



TS79L06 Electrical Characteristics

($V_{in} = -11V$, $I_{out} = 40mA$, $0^{\circ}C \leq T_j \leq 125^{\circ}C$, $C_{in} = 0.33\mu F$, $C_{out} = 0.1\mu F$; unless otherwise specified.)

Parameter		Test Conditions	Min	Typ	Max	Unit
Output voltage	Vout	$T_j = 25^{\circ}C$	- 5.76	- 6	- 6.24	V
		$-8.5V \leq V_{in} \leq -21V$, $5mA \leq I_{out} \leq 100mA$	- 5.70	- 6	- 6.30	
Line Regulation	REGline	$T_j = 25^{\circ}C$	--	50	150	mV
Load Regulation	REGload	$T_j = 25^{\circ}C$	$5mA \leq I_{out} \leq 100mA$	--	20	
			$5mA \leq I_{out} \leq 40mA$	--	10	30
Quiescent Current	Iq	$I_{out} = 0$, $T_j = 25^{\circ}C$	--	3	6	mA
Quiescent Current Change	ΔIq	$-9V \leq V_{in} \leq -21V$	--	--	1.5	
		$1mA \leq I_{out} \leq 40mA$	--	--	0.1	
Output Noise Voltage	Vn	$10Hz \leq f \leq 100KHz$, $T_j = 25^{\circ}C$	--	40	--	μV
Ripple Rejection Ratio	RR	$f = 120Hz$, $-9V \leq V_{in} \leq -19V$	41	49	--	dB
Voltage Drop	Vdrop	$T_j = 25^{\circ}C$	--	1.7	--	V
Peak Output Current	I _{o peak}	$T_j = 25^{\circ}C$	--	0.15	--	A

TS79L08 Electrical Characteristics

($V_{in} = -14V$, $I_{out} = 40mA$, $0^{\circ}C \leq T_j \leq 125^{\circ}C$, $C_{in} = 0.33\mu F$, $C_{out} = 0.1\mu F$; unless otherwise specified.)

Parameter	Symbol	Test Conditions	Min	Typ	Max	Unit
Output Voltage	Vout	$T_j = 25^{\circ}C$	- 7.69	- 8	- 8.32	V
		$-10.5V \leq V_{in} \leq -23V$, $5mA \leq I_{out} \leq 100mA$	- 7.61	- 8	- 8.40	
Line Regulation	REGline	$T_j = 25^{\circ}C$	--	80	160	mV
Load Regulation	REGload	$T_j = 25^{\circ}C$	$5mA \leq I_{out} \leq 100mA$	--	25	
			$5mA \leq I_{out} \leq 40mA$	--	10	40
Quiescent Current	Iq	$I_{out} = 0$, $T_j = 25^{\circ}C$	--	3	6	mA
Quiescent Current Change	ΔIq	$-11V \leq V_{in} \leq -23V$	--	--	1.5	
		$1mA \leq I_{out} \leq 40mA$	--	--	0.1	
Output Noise Voltage	Vn	$10Hz \leq f \leq 100KHz$, $T_j = 25^{\circ}C$	--	60	--	μV
Ripple Rejection Ratio	RR	$f = 120Hz$, $-13V \leq V_{in} \leq -23V$	37	57	--	dB
Voltage Drop	Vdrop	$T_j = 25^{\circ}C$	--	1.7	--	V
Peak Output Current	I _{o peak}	$T_j = 25^{\circ}C$	--	0.15	--	A

- Pulse testing techniques are used to maintain the junction temperature as close to the ambient temperature as possible, and thermal effects must be taken into account separately.
- This specification applies only for DC power dissipation permitted by absolute maximum ratings.



TS79L09 Electrical Characteristics

($V_{in} = -15V$, $I_{out} = 40mA$, $0^{\circ}C \leq T_j \leq 125^{\circ}C$, $C_{in} = 0.33\mu F$, $C_{out} = 0.1\mu F$; unless otherwise specified.)

Parameter	Symbol	Test Conditions	Min	Typ	Max	Unit
Output Voltage	Vout	$T_j = 25^{\circ}C$	- 8.65	- 9	- 9.36	V
		$-11.5V \leq V_{in} \leq -24V$, $5mA \leq I_{out} \leq 100mA$	- 8.57	- 9	- 9.45	
Line Regulation	REGline	$T_j = 25^{\circ}C$ $-11.5V \leq V_{in} \leq -24V$, $I_o = 40mA$	--	90	180	mV
Load Regulation	REGload	$T_j = 25^{\circ}C$ $5mA \leq I_{out} \leq 100mA$	--	30	90	
		$5mA \leq I_{out} \leq 40mA$	--	15	45	
Quiescent Current	Iq	$I_{out} = 0$, $T_j = 25^{\circ}C$	--	3	6	mA
Quiescent Current Change	ΔIq	$-12V \leq V_{in} \leq -24V$	--	--	1.5	
		$5mA \leq I_{out} \leq 40mA$	--	--	0.1	
Output Noise Voltage	Vn	$10Hz \leq f \leq 100KHz$, $T_j = 25^{\circ}C$	--	60	--	μV
Ripple Rejection Ratio	RR	$f = 120Hz$, $-14V \leq V_{in} \leq -24V$	37	57	--	dB
Voltage Drop	Vdrop	$T_j = 25^{\circ}C$	--	1.7	--	V
Peak Output Current	I_o peak	$T_j = 25^{\circ}C$	--	0.15	--	A

TS79L12 Electrical Characteristics

($V_{in} = -19V$, $I_{out} = 40mA$, $0^{\circ}C \leq T_j \leq 125^{\circ}C$, $C_{in} = 0.33\mu F$, $C_{out} = 0.1\mu F$; unless otherwise specified.)

Parameter	Symbol	Test Conditions	Min	Typ	Max	Unit
Output Voltage	Vout	$T_j = 25^{\circ}C$	- 11.53	- 12	- 12.48	V
		$-14.5V \leq V_{in} \leq -27V$, $5mA \leq I_{out} \leq 100mA$	- 11.42	- 12	- 12.60	
Line Regulation	REGline	$T_j = 25^{\circ}C$ $-14.5V \leq V_{in} \leq -27V$, $I_o = 40mA$	--	120	240	mV
Load Regulation	REGload	$T_j = 25^{\circ}C$ $5mA \leq I_{out} \leq 100mA$	--	40	120	
		$5mA \leq I_{out} \leq 40mA$	--	20	60	
Quiescent Current	Iq	$T_j = 25^{\circ}C$, $I_{out} = 0$	--	3	6.5	mA
Quiescent Current Change	ΔIq	$-16V \leq V_{in} \leq -27V$	--	--	1.5	
		$5mA \leq I_{out} \leq 40mA$	--	--	0.1	
Output Noise Voltage	Vn	$10Hz \leq f \leq 100KHz$, $T_j = 25^{\circ}C$	--	80	--	μV
Ripple Rejection Ratio	RR	$f = 120Hz$, $-15V \leq V_{in} \leq -25V$	37	42	--	dB
Voltage Drop	Vdrop	$T_j = 25^{\circ}C$	--	1.7	--	V
Peak Output Current	I_o peak	$T_j = 25^{\circ}C$	--	0.15	--	A

- Pulse testing techniques are used to maintain the junction temperature as close to the ambient temperature as possible, and thermal effects must be taken into account separately.
- This specification applies only for DC power dissipation permitted by absolute maximum ratings.



TS79L15 Electrical Characteristics

($V_{in} = -23V$, $I_{out} = 40mA$, $0^{\circ}C \leq T_j \leq 125^{\circ}C$, $C_{in} = 0.33\mu F$, $C_{out} = 0.1\mu F$; unless otherwise specified.)

Parameter	Symbol	Test Conditions	Min	Typ	Max	Unit
Output Voltage	Vout	$T_j = 25^{\circ}C$	- 14.42	- 15	- 15.60	V
		$-17.5V \leq V_{in} \leq -30V$, $5mA \leq I_{out} \leq 100mA$	- 14.28	- 15	- 15.75	
Line Regulation	REGline	$T_j = 25^{\circ}C$ $-17.5V \leq V_{in} \leq -30V$, $I_o = 40mA$	--	150	300	mV
Load Regulation	REGload	$T_j = 25^{\circ}C$ $5mA \leq I_{out} \leq 100mA$	--	50	150	
		$5mA \leq I_{out} \leq 40mA$	--	25	75	
Quiescent Current	Iq	$T_j = 25^{\circ}C$, $I_{out} = 0$	--	3	6.5	mA
Quiescent Current Change	ΔIq	$-20V \leq V_{in} \leq -30V$	--	--	1.5	
		$5mA \leq I_{out} \leq 40mA$	--	--	0.1	
Output Noise Voltage	Vn	$10Hz \leq f \leq 100KHz$, $T_j = 25^{\circ}C$	--	90	--	μV
Ripple Rejection Ratio	RR	$f = 120Hz$, $-18V \leq V_{in} \leq -28V$	34	39	--	dB
Voltage Drop	Vdrop	$T_j = 25^{\circ}C$	--	1.7	--	V
Peak Output Current	I_o peak	$T_j = 25^{\circ}C$	--	0.15	--	A

TS79L18 Electrical Characteristics

($V_{in} = -27V$, $I_{out} = 40mA$, $0^{\circ}C \leq T_j \leq 125^{\circ}C$, $C_{in} = 0.33\mu F$, $C_{out} = 0.1\mu F$; unless otherwise specified.)

Parameter	Symbol	Test Conditions	Min	Typ	Max	Unit
Output Voltage	Vout	$T_j = 25^{\circ}C$	- 17.30	- 18	- 18.72	V
		$-21V \leq V_{in} \leq -33V$, $5mA \leq I_{out} \leq 100mA$	- 17.14	- 18	- 18.90	
Line Regulation	REGline	$T_j = 25^{\circ}C$ $-21V \leq V_{in} \leq -33V$, $I_o = 40mA$	--	180	360	mV
Load Regulation	REGload	$T_j = 25^{\circ}C$ $5mA \leq I_{out} \leq 100mA$	--	60	180	
		$5mA \leq I_{out} \leq 40mA$	--	30	90	
Quiescent Current	Iq	$T_j = 25^{\circ}C$, $I_{out} = 0$	--	3	6.5	mA
Quiescent Current Change	ΔIq	$-21V \leq V_{in} \leq -33V$	--	--	1.5	
		$5mA \leq I_{out} \leq 40mA$	--	--	0.1	
Output Noise Voltage	Vn	$10Hz \leq f \leq 100KHz$, $T_j = 25^{\circ}C$	--	150	--	μV
Ripple Rejection Ratio	RR	$f = 120Hz$, $-23V \leq V_{in} \leq -33V$	33	48	--	dB
Voltage Drop	Vdrop	$T_j = 25^{\circ}C$	--	1.7	--	V
Peak Output Current	I_o peak	$T_j = 25^{\circ}C$	--	0.15	--	A

- Pulse testing techniques are used to maintain the junction temperature as close to the ambient temperature as possible, and thermal effects must be taken into account separately.
- This specification applies only for DC power dissipation permitted by absolute maximum ratings.



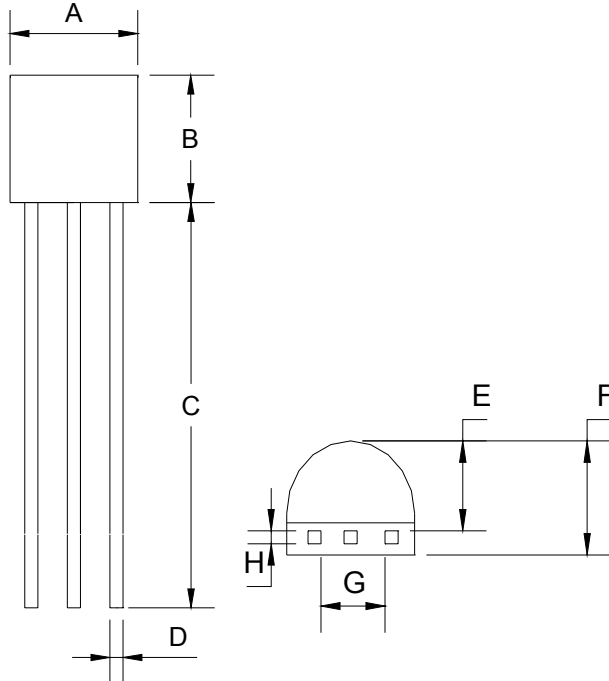
TS79L24 Electrical Characteristics

($V_{in} = -33V$, $I_{out} = 40mA$, $0^{\circ}C \leq T_j \leq 125^{\circ}C$, $C_{in} = 0.33\mu F$, $C_{out} = 0.1\mu F$; unless otherwise specified.)

Parameter	Symbol	Test Conditions	Min	Typ	Max	Unit
Output Voltage	V_{out}	$T_j = 25^{\circ}C$	- 23.07	- 24	- 24.96	V
		$-27V \leq V_{in} \leq -38V$, $5mA \leq I_{out} \leq 100mA$	- 22.85	- 24	- 25.20	
Line Regulation	REGline	$T_j = 25^{\circ}C$ $-27V \leq V_{in} \leq -38V$, $I_o = 40mA$	--	200	400	mV
Load Regulation	REGload	$T_j = 25^{\circ}C$ $5mA \leq I_{out} \leq 100mA$	--	80	240	
		$5mA \leq I_{out} \leq 40mA$	--	40	120	
Quiescent Current	I_q	$I_{out} = 0$, $T_j = 25^{\circ}C$	--	4	7	mA
Quiescent Current Change	ΔI_q	$-28V \leq V_{in} \leq -38V$	--	--	1.5	
		$5mA \leq I_{out} \leq 40mA$	--	--	0.1	
Output Noise Voltage	V_n	$10Hz \leq f \leq 100KHz$, $T_j = 25^{\circ}C$	--	200	--	μV
Ripple Rejection Ratio	RR	$f = 120Hz$, $-29V \leq V_{in} \leq -35V$	31	45	--	dB
Voltage Drop	V_{drop}	$T_j = 25^{\circ}C$	--	1.7	--	V
Peak Output Current	$I_{o\ peak}$	$T_j = 25^{\circ}C$	--	0.15	--	A

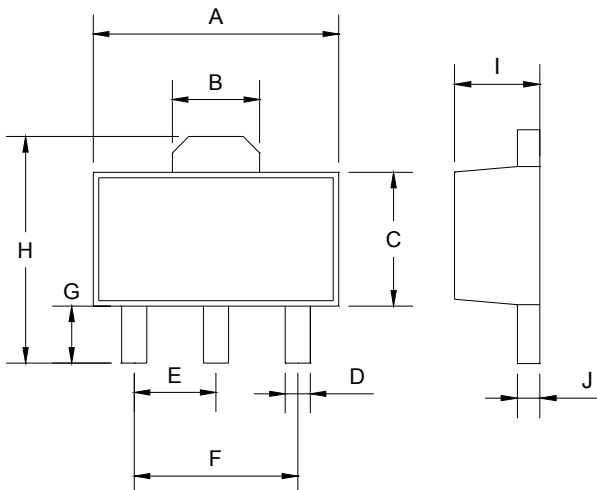
- Pulse testing techniques are used to maintain the junction temperature as close to the ambient temperature as possible, and thermal effects must be taken into account separately.
- This specification applies only for DC power dissipation permitted by absolute maximum ratings.

TO-92 Mechanical Drawing



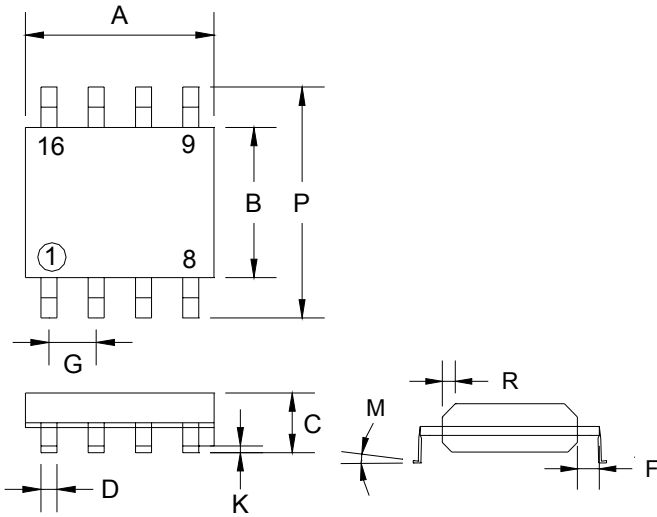
TO-92 DIMENSION				
DIM	MILLIMETERS		INCHES	
	MIN	MAX	MIN	MAX
A	4.30	4.70	0.169	0.185
B	4.30	4.70	0.169	0.185
C	14.30(typ)		0.563(typ)	
D	0.43	0.49	0.017	0.019
E	2.19	2.81	0.086	0.111
F	3.30	3.70	0.130	0.146
G	2.42	2.66	0.095	0.105
H	0.37	0.43	0.015	0.017

SOT-89 Mechanical Drawing



SOT-89 DIMENSION				
DIM	MILLIMETERS		INCHES	
	MIN	MAX	MIN	MAX
A	4.40	4.60	0.173	0.181
B	1.50	1.7	0.059	0.070
C	2.30	2.60	0.090	0.102
D	0.40	0.52	0.016	0.020
E	1.50	1.50	0.059	0.059
F	3.00	3.00	0.118	0.118
G	0.89	1.20	0.035	0.047
H	4.05	4.25	0.159	0.167
I	1.4	1.6	0.055	0.068
J	0.35	0.44	0.014	0.017

SOP-8 Mechanical Drawing



DIM	SOP-8 DIMENSION			
	MILLIMETERS		INCHES	
	MIN	MAX	MIN	MAX
A	4.80	5.00	0.189	0.196
B	3.80	4.00	0.150	0.157
C	1.35	1.75	0.054	0.068
D	0.35	0.49	0.014	0.019
F	0.40	1.25	0.016	0.049
G	1.27 (typ)		0.05 (typ)	
K	0.10	0.25	0.004	0.009
M	0°	7°	0°	7°
P	5.80	6.20	0.229	0.244
R	0.25	0.50	0.010	0.019