



Part Number : [705530004](#)

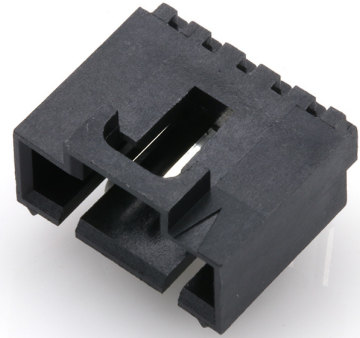
Product Description : 2.54mm Pitch SL Header, Low Profile, Single Row, Right Angle, 3.05mm Pocket, Shrouded, 5 Circuits, 0.38µm Gold (Au) Selective Plating, Tin (Sn) PC Tail Plating

Series Number : 70553

Status : Active

Product Category : PCB Headers and Receptacles

Engineering Number : A-70553-0004



Documents & Resources

Drawings

[Drawing 705530004_sd.pdf](#)

[Packaging Design Drawing PK-70873-0015-001.pdf](#)

3D Models and Design Files

[3D Model 705530004_stp.zip](#)

Specifications


[Product Specification PS-70400-001.pdf](#)

[Product Specification PS-70541-001.pdf](#)

[Test Summary TS-70541-100-001.pdf](#)

Product Environment Compliance

Compliance

| | |
|--------------------|---|
| GADSL/IMDS | Compliant with Exemption 44; 34; 33 |
| China RoHS |  |
| EU ELV | Not Relevant |
| Low-Halogen Status | Not Low-Halogen per IEC 61249-2-21 |
| REACH SVHC | Not Contained per D(2023)3788-DC (14 Jun 2023) |
| EU RoHS | Compliant per EU 2015/863 |

[Multiple Part Product Compliance Statements](#)

- Eu RoHS
- REACH SVHC
- Low-Halogen

Multiple Part Industry Compliance Documents

- IPC 1752A Class C
- IPC 1752A Class D
- Molex Product Compliance Declaration
- IEC-62474
- chemSHERPA (xml)

EU RoHS Certificate of Compliance

Part Details

General

| | |
|----------------|---|
| Status | Active |
| Category | PCB Headers and Receptacles |
| Series | 70553 |
| Description | 2.54mm Pitch SL Header, Low Profile, Single Row, Right Angle, 3.05mm Pocket, Shrouded, 5 Circuits, 0.38µm Gold (Au) Selective Plating, Tin (Sn) PC Tail Plating |
| Application | Signal, Wire-to-Board |
| Component Type | PCB Header |
| Product Family | SL Modular Connectors |
| Product Name | SL |
| UPC | 800753597396 |

Agency

| | |
|-----|---------|
| CSA | LR19980 |
| UL | E29179 |

Electrical

| | |
|-------------------------------|------|
| Current - Maximum per Contact | 3.0A |
| Voltage - Maximum | 250V |

Physical

| | |
|-----------|----|
| Breakaway | No |
|-----------|----|

| | |
|--------------------------------|--------------------------------|
| Circuits (Loaded) | 5 |
| Circuits (maximum) | 5 |
| Color - Resin | Black |
| Durability (mating cycles max) | 50 |
| Flammability | 94V-0 |
| Glow-Wire Capable | No |
| Guide to Mating Part | Yes |
| Lock to Mating Part | Yes |
| Material - Metal | Brass, Phosphor Bronze |
| Material - Plating Mating | Gold |
| Material - Plating Termination | Tin |
| Material - Resin | High Temperature Thermoplastic |
| Net Weight | 1.112/g |
| Number of Rows | 1 |
| Orientation | Right Angle |
| Packaging Type | Tube |
| PC Tail Length | 3.30mm |
| PCB Locator | No |
| PCB Retention | None |
| PCB Thickness - Recommended | 1.60mm |
| Pitch - Mating Interface | 2.54mm |
| Plating min - Mating | 0.381µm |
| Plating min - Termination | 1.905µm |
| Polarized to Mating Part | Yes |
| Shrouded | Fully |
| Stackable | No |
| Temperature Range - Operating | -40° to +105°C |
| Termination Interface Style | Through Hole |

Solder Process Data

| | |
|------------------------------|------|
| Max-Duration | 3 |
| Lead-Free Process Capability | WAVE |
| Max-Cycle | 1 |
| Max-Temp | 260 |

Mates With / Use With

Mates with Part(s)

| Description | Part Number |
|---|--------------|
| SL Single Row Crimp Housings and CPA Retainers | <u>70066</u> |
| SL Single Row Female Insulation Displacement Connector Assemblies | <u>70400</u> |
| SL Single Row Female Receptacles | <u>70430</u> |

This document was generated on Mar 05, 2024