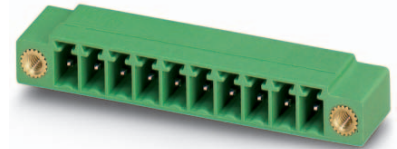


Order No.: 1827868

Type: MC 1,5/ 2-GF-3,81

Header



The figure shows a 10-position version of the product

1 Main features



- | | | | |
|-------------------------|---------------------|------------------------|---------------------|
| • Number of positions | 2 | • Nominal current | 8 A |
| • Nominal cross section | 1.5 mm ² | • Nominal voltage | 160 V |
| • Color | green | • Connection direction | 0 ° |
| • Pitch | 3.81 mm | • Type of packaging | packed in cardboard |
| • Mounting type | Wave soldering | | |

2 Your advantages

- ✓ Well-known mounting principle allows worldwide use
- ✓ Screwable flange for superior mechanical stability
- ✓ Maximum flexibility when it comes to device design – one header for connectors with different connection technologies



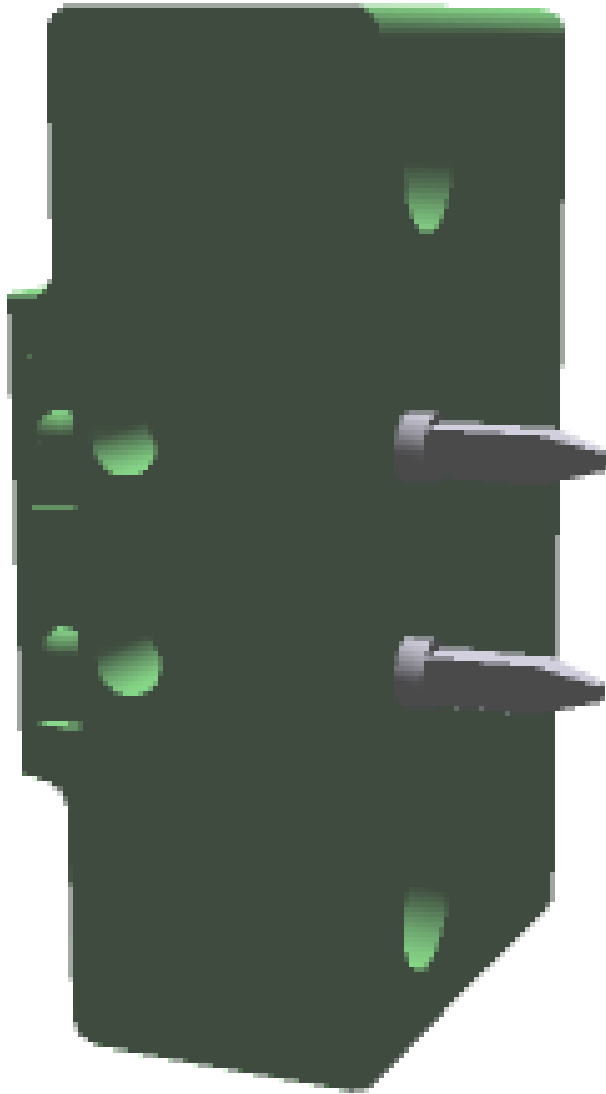
Make sure you always use the latest documentation.
It can be downloaded at: phoenixcontact.net/product/1827868

3 Table of contents

1	Main features.....	1
2	Your advantages	1
3	Table of contents	2
4	3D model in PDF can be activated (Acrobat Reader only).....	3
5	Item properties.....	4
	5.1 Material data	4
6	Dimensions.....	4
	6.1 Dimensions for the product	4
	6.2 Dimensions for PCB design.....	4
7	Series drawing.....	5
8	Packaging information	6
9	Application.....	6
	9.1 Temperature limit values	6
10	Mechanical tests.....	7
11	Electrical tests	8
	11.1 Electrical data.....	8
	11.2 Air and creepage distances	8
12	Current carrying capacity/derating curves	9
13	Environmental and durability tests	10
	13.1 Vibration test	10
14	Classification for connectors.....	10
15	Approvals	10
16	Commercial Data.....	12
17	corresponding plugs	12
18	Accessories.....	12
19	Combination tests.....	13

1827868 MC 1,5/ 2-GF-3,81

4 3D model in PDF can be activated (Acrobat Reader only)



1827868 MC 1,5/ 2-GF-3,81**5 Item properties**

Order No.	1827868
Type	MC 1,5/ 2-GF-3,81
Type of contact	Male connector
Range of articles	MC 1,5/..-GF
Pitch	3.81 mm
Number of positions	2
Locking	Threaded flange
Mounting type	Wave soldering
Pin layout	Linear pinning

5.1 Material data

Material of metal parts	
Note	WEEE/RoHS-compliant, whisker-free acc. to IEC 60068-2-82/JEDEC JESD 201
Contact material	Cu alloy
Surface contact area	Ni 1 µm ... 3 µm , Sn 3 µm ... 5 µm
Soldering area surface	Ni 1 µm ... 3 µm , Sn 3 µm ... 5 µm
Surface characteristics	Tin-plated
Insulating material data	
Insulating material	Housing PBT
CTI according to IEC 60112	225
Flammability rating according to UL 94	V0
Color	green (6021)

6 Dimensions**6.1 Dimensions for the product**

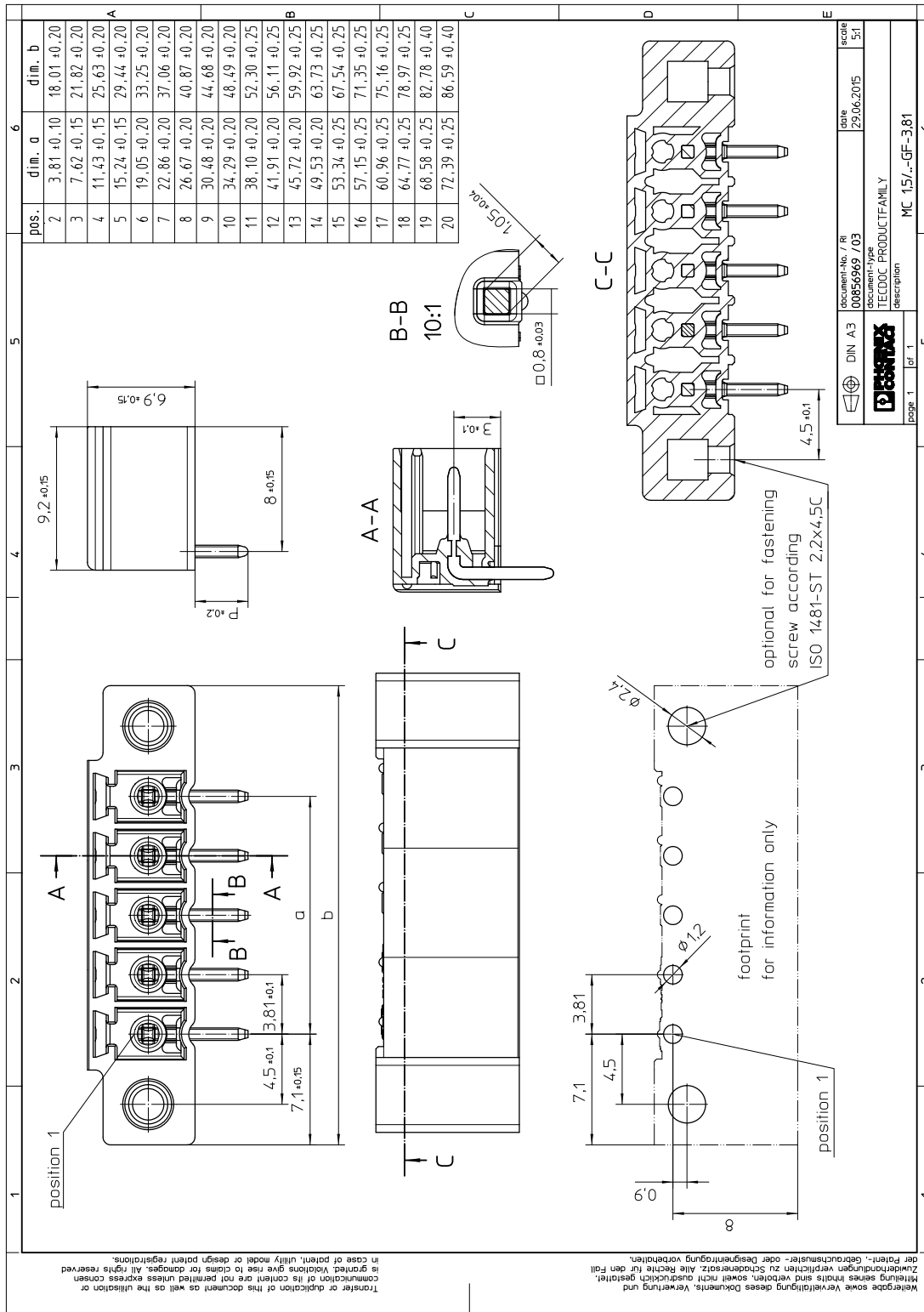
Length	9.2 mm
Width	18.01 mm
Height (without solder pin)	6.9 mm
Total height	10.3 mm
Solder pin [P]	3.4 mm
Dimension a	3.81 mm

6.2 Dimensions for PCB design

Hole diameter	1.2 mm
Pin dimensions	0,8 x 0,8

1827868 MC 1,5/ 2-GF-3,81

7 Series drawing



1827868 MC 1,5/ 2-GF-3,81**8 Packaging information**

Type of packaging	packed in cardboard
Pieces per package	250

9 Application**9.1 Temperature limit values**

Ambient temperature (storage/transport)	-40 °C ... 70 °C
Ambient temperature (assembly)	-5 °C ... 100 °C
Ambient temperature (operation)	-40 °C (dependent on the derating curve)

1827868 MC 1,5/ 2-GF-3,81**10 Mechanical tests**

Mechanical test group A	
Specification	IEC 61984:2008-10
Visual test	Test passed
Specification	IEC 60512-1-1:2002-02
Dimensional test	Test passed
Specification	IEC 60512-1-2:2002-02
Resistance of marking	Test passed
Specification	IEC 60068-2-70:1995-12
Insertion and withdrawal force	Test passed
Specification	IEC 60512-13-2:2006-02
No. of cycles	25
Insertion strength per pos. approx.	6 N
Withdraw strength per pos. approx.	4 N
Polarization and coding	Test passed
Specification	IEC 60512-13-5:2006-02
Test force	20 N
Contact retention in insert	Test passed
Specification	IEC 60512-15-1:2008-05
Test force per pos.	21 N

1827868 MC 1,5/ 2-GF-3,81**11 Electrical tests****11.1 Electrical data**

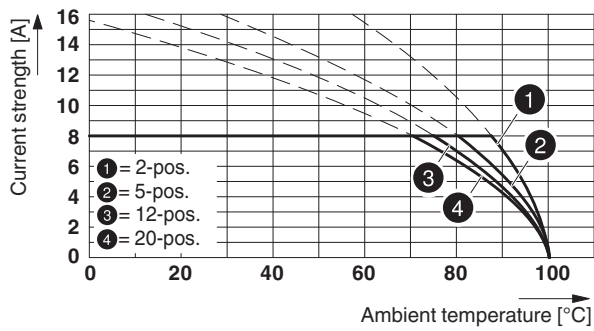
Rated current / conductor cross section	8 A / 1.5 mm ²
Rated insulation voltage (III/2)	160 V
Rated surge voltage (III/2)	2.5 kV
Contact resistance	1.3 mΩ
Degree of pollution	2

11.2 Air and creepage distances

Component	Header		
Specification	IEC 60664-1:2007-04		
Mains type	unearthed mains		
Insulating material group	IIIa		
Comparative tracking index (IEC 60112:2003-01)	CTI 225		
Rated insulation voltage	160 V	160 V	250 V
Rated surge voltage	2.5 kV	2.5 kV	2.5 kV
Degree of pollution	3	2	2
Overvoltage category	III	III	II
Minimum clearance case A (inhomogeneous field)	1.5 mm	1.5 mm	1.5 mm
Minimum value of the creepage path requirement in acc. with table	2.5 mm	1.6 mm	2.5 mm

1827868 MC 1,5/ 2-GF-3,81**12 Current carrying capacity/derating curves**

Specification	IEC 61984:2008-10
Note	Representation based on IEC 60512-5-2:2002-02
Reduction factor	0.8
Number of positions	See diagram
Conductor cross section	1.5 mm ²
Note	

Type: MC 1,5/...-STF-3,81 with MC 1,5/...-GF-3,81




1827868 MC 1,5/ 2-GF-3,81**13 Environmental and durability tests****13.1 Vibration test**

Specification	IEC 60068-2-6:2007-12
Result	Test passed
Frequency	10 - 150 - 10 Hz
Sweep speed	1 octave/min
Amplitude	0.35 mm (10 - 60.1 Hz)
Acceleration	5 g (60.1 - 150 Hz)
Test duration per axis	2.5 h
Test directions	X-, Y- and Z-axis

14 Classification for connectors

Specification	IEC 61984:2008-10
Main features	Connectors without switching capacity (COC)
Construction form	Fixed connectors
Strain relief elements	without strain relief
Protection against electric shock	Not encapsulated - touch-proof when inserted
Protection class	
Protective conductor	without PE
Lock	no

15 Approvals

CSA 				
Use group	B	D		
mm ² /AWG/kcmil				
Voltage	300 V	300 V		
Current	8 A	8 A		
VDE Gutachten mit Fertigungsüberwachung 				
mm ² /AWG/kcmil				
Voltage	160 V			
Current	8 A			
IECEE CB Scheme 				
mm ² /AWG/kcmil				
Voltage	160 V			
Current	8 A			
CCA				
mm ² /AWG/kcmil				
Voltage	160 V			
Current	8 A			

1827868 MC 1,5/ 2-GF-3,81

cULus Recognized 

Use group	B	D		
mm ² /AWG/kcmil				
Voltage	300 V	300 V		
Current	8 A	8 A		

EAC 

1827868 MC 1,5/ 2-GF-3,81**16 Commercial Data**

Order No.	1827868
Type	MC 1,5/ 2-GF-3,81
Pieces per package	250
Net weight	1.51 g
GTIN	4017918050313
Customs tariff number	Information that applies locally, see link on page 1
Country of origin	Information that applies locally, see link on page 1

17 corresponding plugs

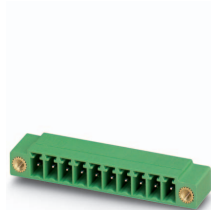
Order No.	Type
1748354	FMC 1,5/ 2-STF-3,81
1827703	MC 1,5/ 2-STF-3,81
1828346	MCVR 1,5/ 2-STF-3,81
1828498	MCVW 1,5/ 2-STF-3,81
1850851	FRONT-MC 1,5/ 2-STF-3,81
1851232	FK-MCP 1,5/ 2-STF-3,81
1852367	MCC 1/ 2-STZF-3,81
1897542	QC 0,5/ 2-STF-3,81

18 Accessories

Description	Order No.	Type
	0804109	SK 3,81/2,8:FORTL.ZAHLEN
Coding profile, is inserted into the slot on the plug or inverted header, red insulating material	1734634	CP-MSTB
	1841174	MC 1,5/10-LWL 1,5-3,81
	1841190	MC 1,5/10-LWL 2,3-3,81
	1841213	MC 1,5/10-LWL 4-3,81

1827868 MC 1,5/ 2-GF-3,81

19 Combination tests

**MC 1,5/-GF**

Specification

Mechanical tests (A)

Insertion/withdrawal force per position

Polarization when inserted
Requirement > 20 NContact holder in insert
Requirements > 20 N**Endurance tests (B)**Contact resistance R_1

Insertion/withdrawal cycles

Contact resistance R_2 Rated impulse voltage at sea level
Voltage waveform $\geq (1.2/50 \mu s)$ Power-frequency withstand voltage
Voltage waveform $\geq (50/60 \text{ Hz})$ Insulation resistance
Requirements > 5 M Ω **Thermal tests (C)**

Tested number of positions

Tested conductor cross section

Test current

Upper limiting temperature
Requirements < 100°C**Climatic tests (D)**

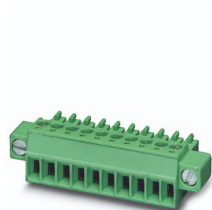
Test sequence 1: low temperature storage

Test sequence 2: heat storage

Test sequence 3: noxious gas storage
(ISO 6988)Rated impulse voltage at sea level
Voltage waveform $\geq (1.2/50 \mu s)$ Power-frequency withstand voltage
Voltage waveform $\geq (50/60 \text{ Hz})$ **Environmental and endurance tests (E)**

Specification

Degree of protection

**MC 1,5/-STF**

IEC 61984

approx. 6 N / 4 N

Test passed

Test passed

1.3 m Ω

25

1.5 m Ω

2.95 kV

1.39 kV

15 T Ω

20

1.5 mm²

8 A DC

Test passed

-40 °C/2 h

100 °C/168 h

0.2 dm³ SO₂ on 300 dm³/
40 °C/1 cycle

2.95 kV

1.39 kV

IEC 61984:2008-10

Finger safety with IP20
test finger