



Huizhou Power Pack Battery Co.,Ltd

Document Title: Config.A stack Up Batteries

Document No.: PPD4048

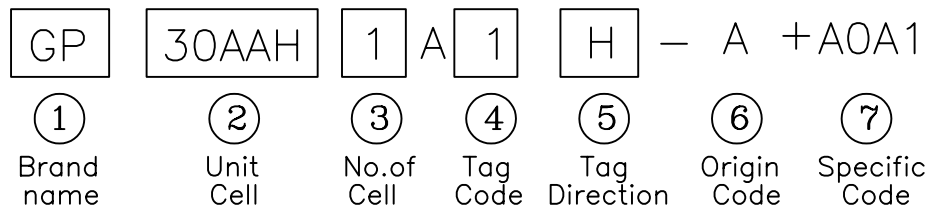
Rev: 4

Page 2 of 5

All signatures could be verified through division's authorized(signature)list

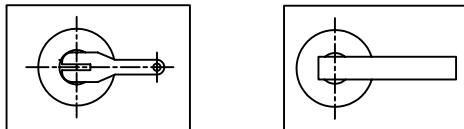
- 1.) Features :
- : Rechargeable NiMH unit cell in vertical column.
 - : Cell connected in series with 1.2V per cell.
 - : Tags at positive and negative terminal for electrical contact.
 - : Positive terminal indicated by "+" label,or marking on shrinkable.
 - : Battery covered by heat shrinkable tube.

2.) Order Number System :

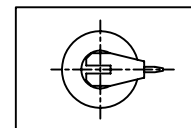


- ① Brand name –GP:GP standard printing/label marking.
- ② Unit cell model number–Depending on size,capacity and chemical system.
(see unit cell data sheet for details).
- ③ No.of unit cell–Usually from 1~5 cells.
- ④ Tag code –

1. Solder tag and Nickel Strip



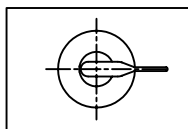
2. PCB tag.



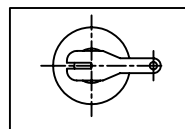
3. Double PCB Pin at positive terminal and Single PCB Pin at negative terminal.



4. Wire tag.



5. Short solder tag.



⑤ Tag Direction Code–

H: Tag pointing at the same direction.

P: Tag pointing at opposite direction.



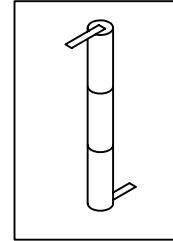
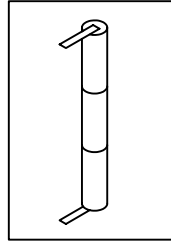
Huizhou Power Pack Battery Co.,Ltd

Document Title: Config.A stack Up Batteries

Document No.:PPD4048

Rev: 4

Page 3 of 5



⑥ Origin Code—Depended on country of origin.

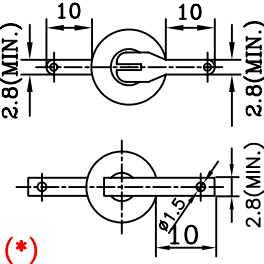
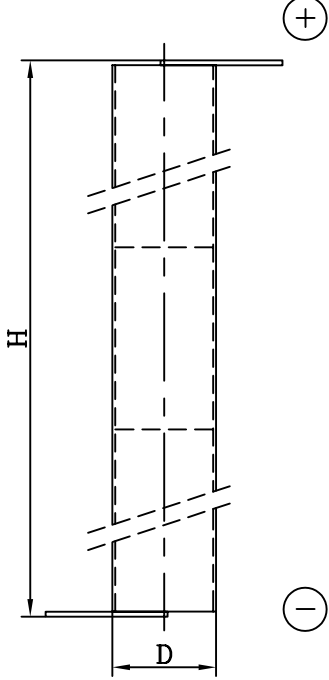
⑦ Specific Code—Detail configuration and accessories.(See 3.)Coding Option.

3.) Coding Option

Tag Code	Tag Direction	Specific Code	Tag	Sketch
1	H	A0A1		<p>Note: See 4.) dimension specification for H D (*) FOR AAA SIZE, 75AAAH 1.8mm hole</p>
2	H	A0A2		
3	H	A0A3		
4	H	A0A4		
5	H	A0A5		



3.) Coding Option

Tag Code	Tag Direction	Specific Code	Tag	Sketch
1	P	B0B1		 <p data-bbox="1023 1346 1283 1480">Note: See 4.) dimension specification for H D</p>



4)Dimension specification.

Order Number							Dimension Specification Maximum(mm)		
Brand	Unit Cell	No.of Cell	Config	Tags		Spec.Code	Diameter(D)	Height(H)	
GP/NT	50AAH 55AAH 60AAH 65AAH 70AAH 75AAH 80AAH	1	A	1	P	B0B1	10.5	45	
		1		1	H	A0A1	10.5	45	
		2		1	P	B0B1	10.5	45	
					1	H	A0A1	10.5	89
	60AAH 75AAH (2/3AA)	1	A	1	H	A0A1	15	30	
				1	P	B0B1	15	30	
	100AAH (9/5AAA) 190AAH (7/5AA)	1	A	1	H	A0A1	10.5	80.5	
				1	P	B0B1	10.5	80.5	
				1	H	A0A1	15	66	
				1	P	B0B1	15	66	
	121AAM 121AAH 135AAH	1	A	1	H	A0A1	14.5	43	
				1	P	B0B1	14.5	43	
	60AAM 80AAM 125AAM 130AAH 130AAM 150AAM 160AAH 170AAH 180AAH 200AAH 210AAH 220AAH 230AAH 240AAH	1	A	1	P	B0B1	15	50.5 (51 for 'C' cap)	
				1	H	A0A1	15		
				2	H	A0A2	15		
				3	H	A0A3	15		
				5	H	A0A5	15		
		3			5	H	A0A5	15.5	150
		4			1	P	B0B1	15.5	200
		5			1	H	A0A1	15.5	250
		6			1	H	A0A1	15.5	300
	90AAALH 100AAALH	1	A	1	H	A0A1	10.5	67	
	1	1		P	B0B1	10.5	67		
80AAALH 85AAALH 91AAALH (AAA)	1	A	1	H	A0A1	11	51		
	1		1	P	B0B1	11	51		
110AAALH (9/5AAAL)	1	A	1	H	A0A1	10.5	80.5		
			1	P	B0B1	10.5	80.5		