

# Talema Elektronik GmbH

Sembdnerstr.5, Postfach 2523, 82110, Germering.

Tel : ++49 89 841 00-0,

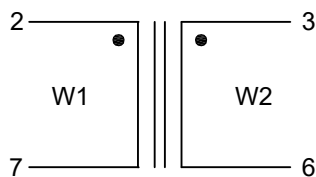
Fax : ++49 89 841 00 25

Email : [info@talema.de](mailto:info@talema.de)



Customer		
Product	Current Compensated Choke	
Part No	21410	Page : 1 of 1
Customer Part No		Date : 16th Feb '10

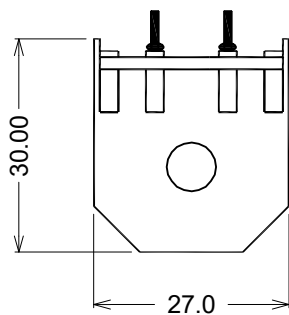
## SCHEMATIC:



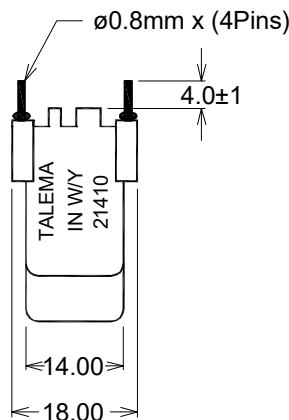
## ELECTRICAL SPECIFICATIONS @25°C:

- 1)  $L_o / Wdg = 2.70 \text{ mH} +50\%, -30\% @10\text{KHz}/0.1\text{mA}$
- 2)  $DCR / Wdg = 45 \text{ mOhms (Typ)}$
- 3) Turns Ratio  $W1 : W2 = 1 : 1$
- 4) H.V. Test:  
 $Wdg - Wdg = 1.5\text{KVrms} / 50\text{Hz} / 2\text{sec}$
- 5) Voltage = 250Vac
- 6) Rated current = 4.0A - referred to 250V-50Hz  
- and +60° ambient temperature
- 7) Climatic category = DIN GKC (-40° to +125°C; Humidity cat. C)

## MECHANICAL SPECIFICATIONS:



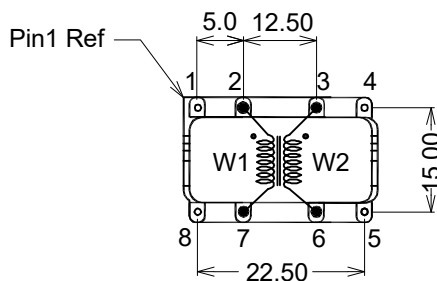
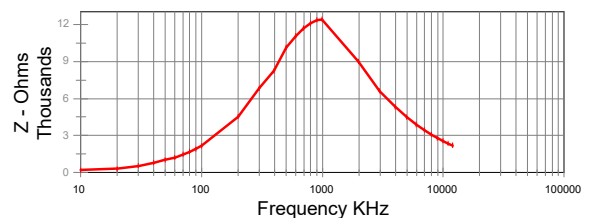
Front View



Side View

Case accordance with UL94-V0


**Impedance Curve**



Pin View

Unit : mm

Pin pitch tolerance : ±0.2mm

	Rev.	Description	Date	Name
	3			
	2			
	1			
	0	Initial issue	16.02.2010	K.Veerappan
<b>DRAFT COPY</b>		<b>ISSUE : 1</b>	<b>REV : 0</b>	