

Technical specification:

Rated voltage: IEC 61076-2-101	4pos 5pos 250 V 60 V
Current rating: IEC 61076-2-101	4 A at 40°C
Insulation resistance: IEC 60512	>=100 MΩ
Pollution degree: IEC 60664-1	3/2
Degree of protection: IEC 60529	IP 67, in mated condition
Temperature range:	-30°C ... +85°C
Mating cycles: IEC 60512-9a	>=100

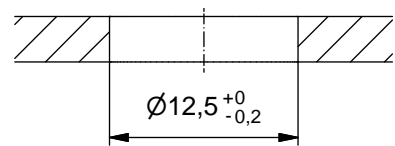
Materials:

Contact:	CuZn
Contact plating:	Nickel, gold plated
Contact carrier:	PA 6.6, UL 94
Sealing:	FPM / NBR
Socket housing:	CuZn, nickel plated
Shroud:	Spring steel
-plating:	Tin plated

Installation specification:

recommended torque:	0,8-1 Nm
Conec installation tool:	Torque wrench: 36-000200 Insert across flats 14: 36-000370 Insert across flats 15: 36-000320

feedthrough



Part no:	Description:	Pos	Note:
43-01170	SAL - 12 - FKH4 - X10	4	
43-01171	SAL - 12S - FKH4 - X10	4	with shroud
43-01172	SAL - 12 - FKH5 - X10	5	
43-01173	SAL - 12S - FKH5 - X10	5	with shroud

DO NOT ALTER CAD DRAWING BY HAND Directive 2011/65/EU RoHS compliant	Index: d 23.08.13 MG Ä4884 Data sheet revised, width across flats changed, installation specification added		dim. in mm	title: Female socket M12x1 axial, backmounting, dip solder, X10	
					date
			name		dwg no: 43K1A499
			drawn 10.10.07 Fromm		
		appd. 18.10.07 W. Schmidt	part no: see table		
general tolerance:		0 ± 0,50mm 0,0 ± 0,25mm 0,00 ± 0,10mm	CONEC®		
THIS DRAWING MAY NOT BE COPIED OR REPRODUCED IN ANY WAY, AND MAY NOT BE PASSED ON TO A THIRD PARTY WITHOUT WRITTEN PERMISSION. OWNERSHIP AND COPYRIGHT OF CONEC GmbH					