

SPECIFICATIONS

Insulation Resistance: 1000MΩ at 500V DC
 Withstanding Voltage: 500Vrms
 Current Rating: 0.5A
 Operating Temp. Range: 20°C to +90°C
 Reflow Solder Temp.: 220°C min./sec.
 260°C peak
 Mating Cycles: 10,000 times

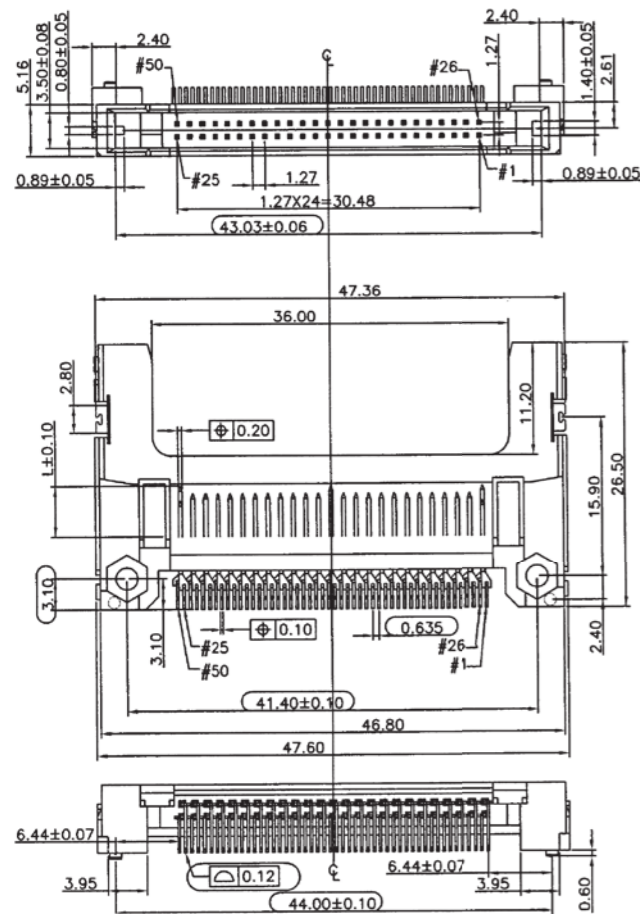
MATERIALS AND FINISH

Insulator: LCP, glass filled (UL94V-0)
 SMT Metal: Brass, pure Sn
 Push Button: Glass reinforced PBT (UL94V-0)
 Cover: Stainless Steel
 Contacts: Brass
 Plating: Contacts - Gold (15μ") over Nickel (40μ")
 Solder Tails - pure Sn

FEATURES

- Adapter for Compact Flash Card Type I
- With push button ejector (optional)
- RoHS2011/65/EU

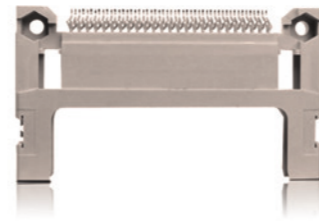
OUTLINE DIMENSIONS (WITHOUT EJECTOR)



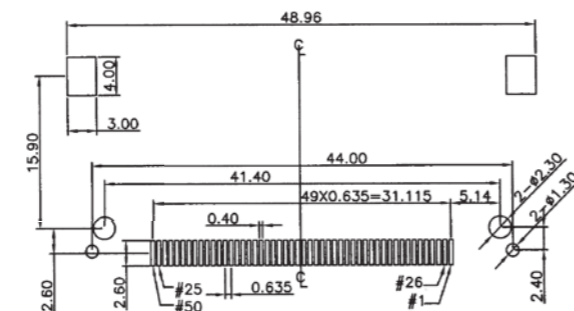
PART NUMBER

CF 050PZ-005-3-0-DS 3

Series	↑
No. of Contacts	↑
90° SMT	↑
Ejector: 0 = Without 1 = Right Side	↑
Insulator Colour: 0 = White (standard) 1 = Black (on request only)	↑
Plating Area: Contacts: Gold (15μ") over 40μ" Nickel Solder Tails: 100μ" Tin over 40μ" Nickels	↑



RECOMMENDED PCB LAYOUT AND MOUNTING AREA



SPECIFICATIONS

Insulation Resistance: 1000MΩ at 500V DC
 Withstanding Voltage: 500Vrms
 Current Rating: 0.5A
 Operating Temp. Range: 5°C to +85°C
 Reflow Solder Temp.: 220°C min. / 60 sec, 260°C peak
 Mating Cycles: 10,000 times

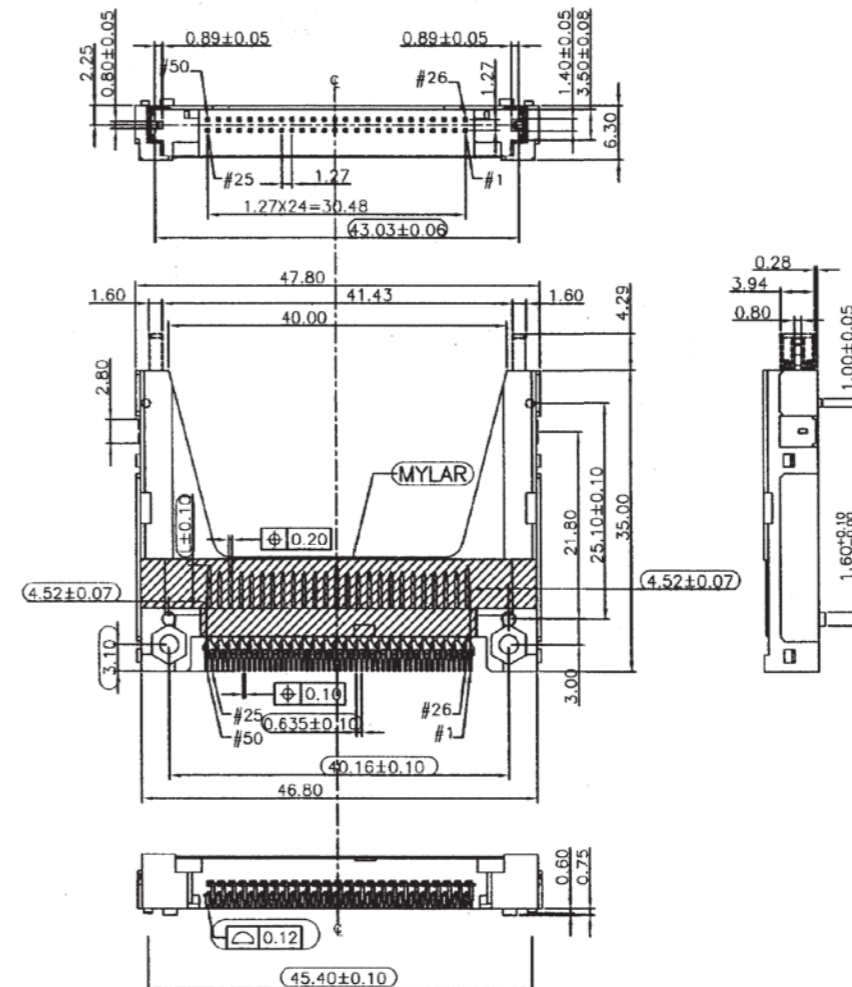
MATERIALS AND FINISH

Insulator: LCP, glass filled (UL94V-0)
 SMT Metal: Brass, pure Sn
 Push Button: Glass reinforced PBT (UL94V-0)
 Cover: Stainless Steel
 Contacts: Brass
 Plating: Contacts - Gold (15μ") over Nickel (40μ")
 Solder Tails - pure Sn

FEATURES

- Adapter for Compact Flash Card Type I and II
- With push button ejector (optional)
- RoHS2011/65/EU

OUTLINE DIMENSIONS (NO STAND-OFF)



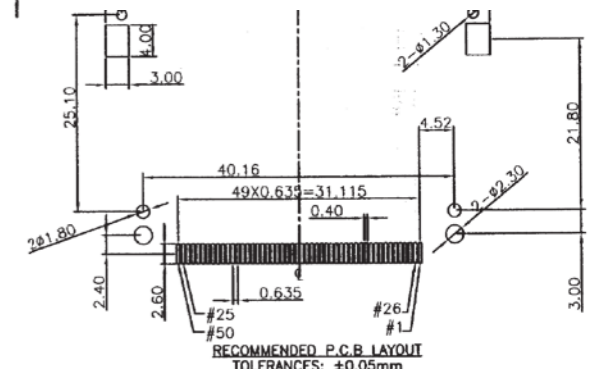
PART NUMBER

CF 050PZ-005-3-0-DS 3

Series	↑
No. of Contacts	↑
Stand-off Height: 0 = without 1 = 2.20mm	↑
0 = Top Mounted on PCB	↑
3 = 90° SMT	↑
Ejector: 0 = Without 1 = Right Side	↑
Plating Area: Contacts: Gold (15μ") over 40μ" Nickel Solder Tails: 100μ" Tin over 40μ" Nickel	↑
No Mark = Without Foil 3 = Mylar Foil	↑



RECOMMENDED PCB LAYOUT



SPECIFICATIONS

Insulation Resistance: 1000MΩ at 500V DC
 Withstanding Voltage: 500Vrms
 Current Rating: 1A AC/DC max.
 Contact Resistance: 40mΩ max. at 20mV max.
 Operating Temp. Range: 55°C to +85°C
 Reflow Solder Temp.: 220°C min. / 60 sec, 260°C peak
 Mating Cycles: 10,000 times

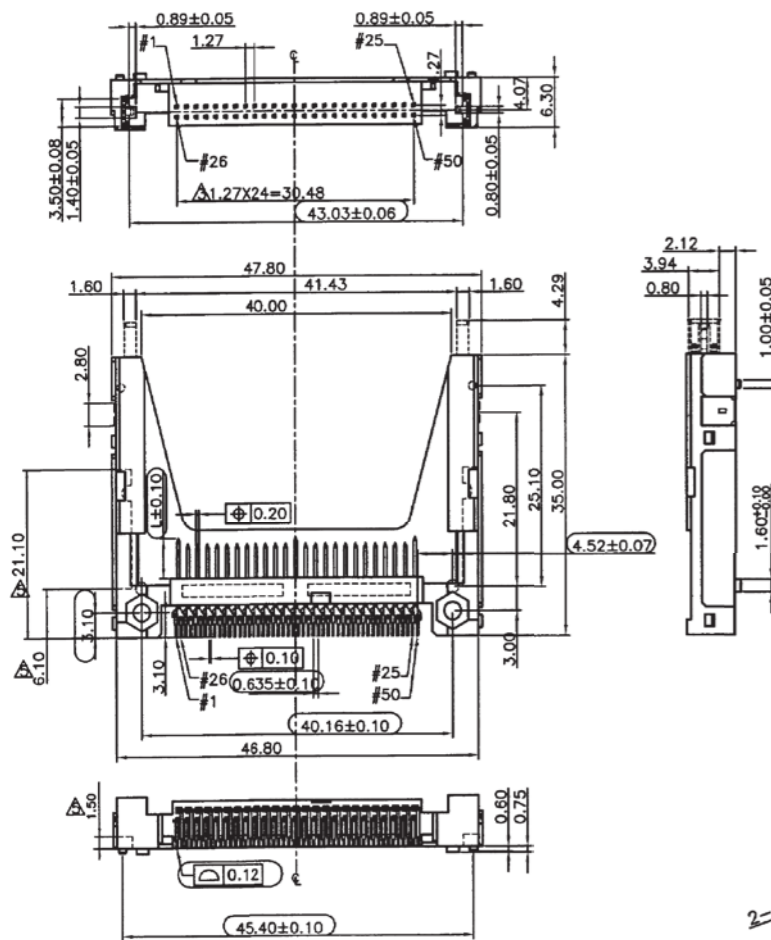
MATERIALS AND FINISH

Insulator: LCP, glass filled (UL94V-0)
 SMT Metal: Brass, pure Sn
 Push Button: Glass reinforced PBT (UL94V-0)
 Cover: Stainless Steel
 Contacts: Brass
 Plating: Contacts - Gold (15μ") over Nickel (40μ")
 Solder Tails - pure Sn

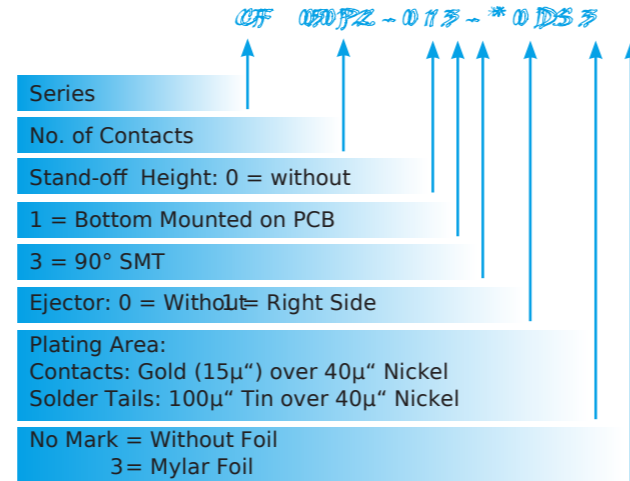
FEATURES

- Adapter for Compact Flash Card type I and II
- Reversed type, for assembly underneath the PCB
- RoHS2011/65/EU

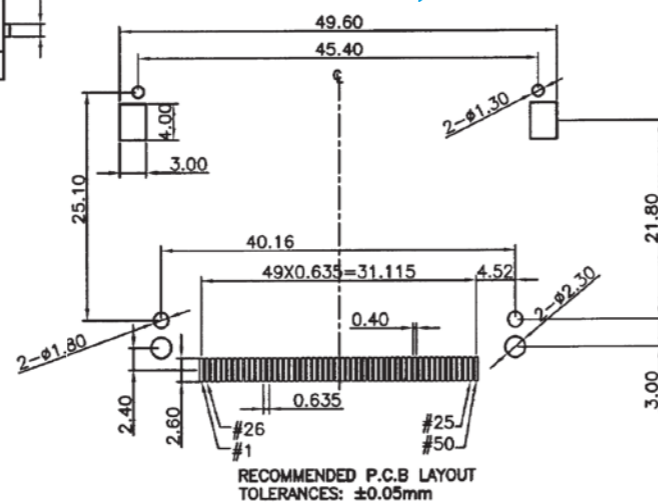
OUTLINE DIMENSIONS



PART NUMBER



RECOMMENDED PCB LAYOUT



SPECIFICATIONS

Insulation Resistance: 1000MΩ at 500V DC
 Withstanding Voltage: 500Vrms
 Current Rating: 1A AC/DC max.
 Contact Resistance: 40mΩ max. at 20mV max.
 Operating Temp. Range: 55°C to +85°C
 Reflow Solder Temp.: 220°C min. / 60 sec., 260°C peak
 Mating Cycles: 10,000 times

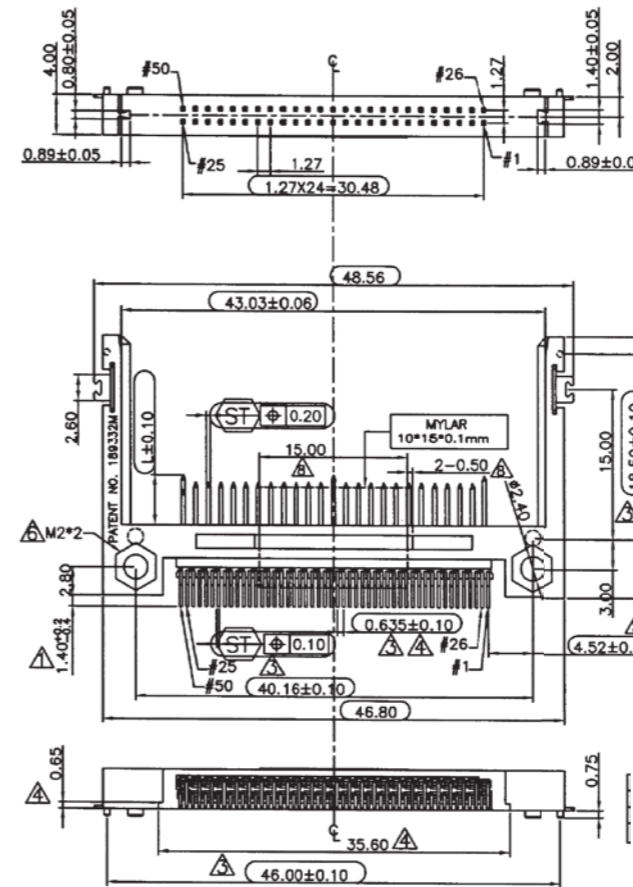
MATERIALS AND FINISH

Insulator: LCP, glass filled (UL94V-0)
 SMT Metal: Brass, pure Sn
 Contacts: Brass
 Plating: Contacts - Gold (15μ") over Nickel (40μ")
 Solder Tails - pure Sn

FEATURES

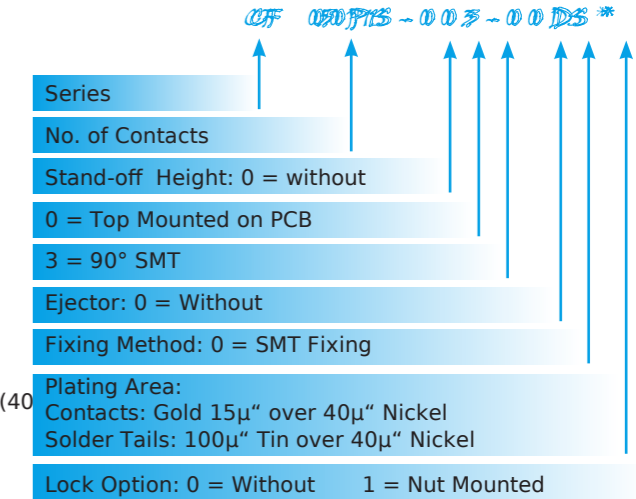
- Adapter for Compact Flash Card type I and II
- Available for top and bottom PCB mounting
- Without cap for pick and place
- RoHS2011/65/EU

OUTLINE DIMENSIONS

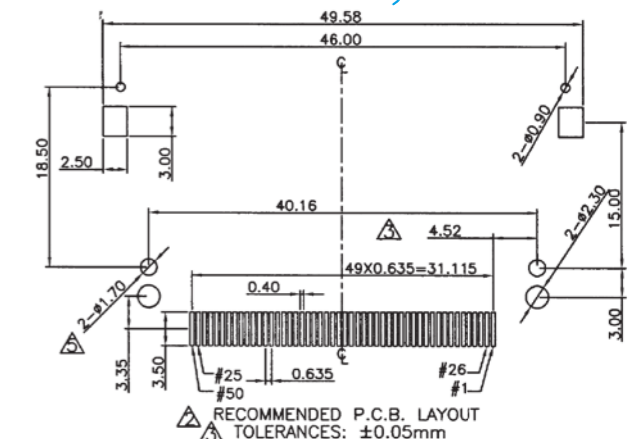


POWER	5.00mm	1, 13, 38, 50
GENERAL	4.25mm	all other pins
DETECT	3.50mm	25, 26
Pin type	Interface Dim. L	Pin No.

PART NUMBER



RECOMMENDED PCB LAYOUT



SPECIFICATIONS

Insulation Resistance: 1000MΩ at 500V DC
 Withstanding Voltage: 500Vrms
 Current Rating: 1A AC/DC max.
 Contact Resistance: 40mΩ max. at 20mV max.
 Operating Temp. Range: 55°C to +85°C
 Reflow Solder Temp.: 220°C min. / 60 sec., 260°C peak
 Mating Cycles: 10,000 times

MATERIALS AND FINISH

Insulator: LCP, glass filled (UL94V-0)
 SMT Metal: Brass, pure Sn
 Contacts: Brass
 Plating: Contacts - Gold (15μ") over Nickel (40μ")
 Solder Tails - pure Sn

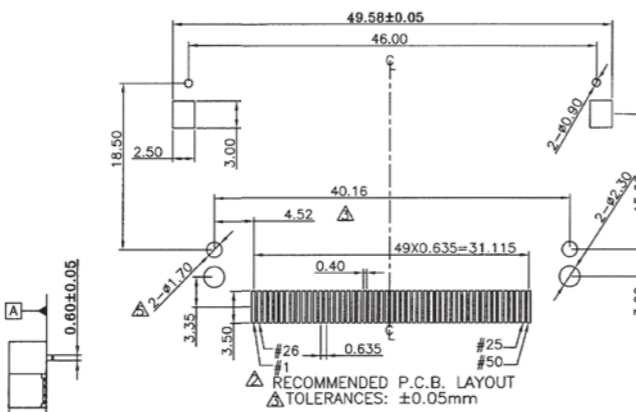
FEATURES

- Adapter for Compact Flash Card Type I
- Available for top and bottom PCB mounting
- Without cap for pick and place
- RoHS2011/65/EU

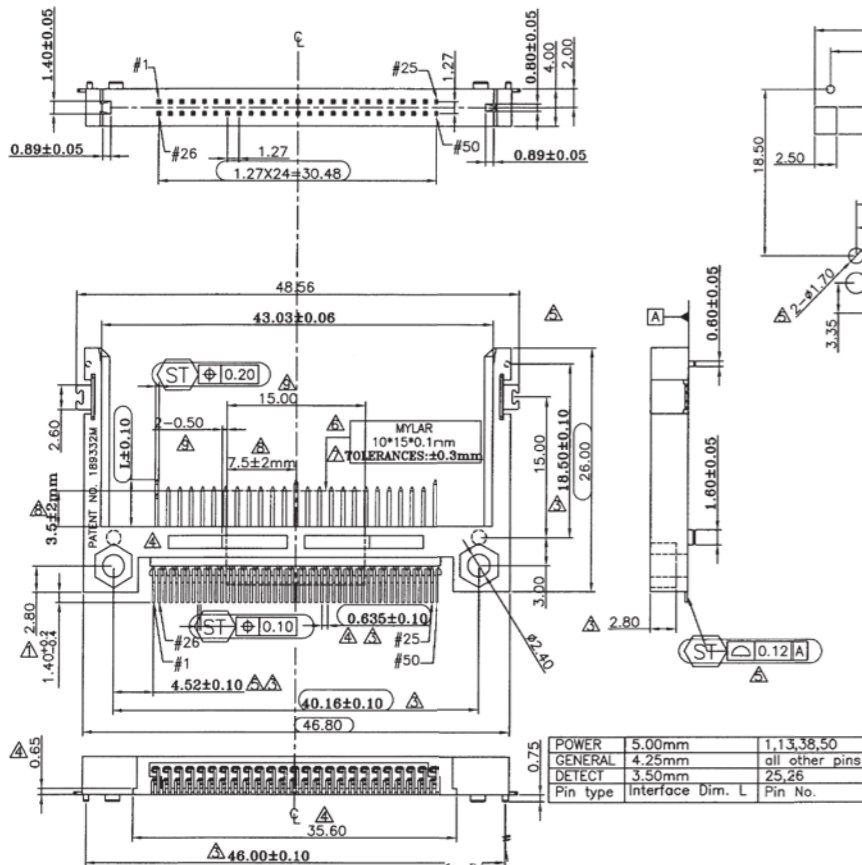
PART NUMBER



RECOMMENDED PCB LAYOUT



OUTLINE DIMENSIONS



SPECIFICATIONS

Insulation Resistance: 1000MΩ at 500V DC
 Withstanding Voltage: 500Vrms
 Current Rating: 1A AC/DC max.
 Contact Resistance: 40mΩ max. at 20mV max.
 Operating Temp. Range: 55°C to +85°C
 Reflow Solder Temp.: 220°C min. / 60 sec, 260°C peak
 Mating Cycles: 10,000 times

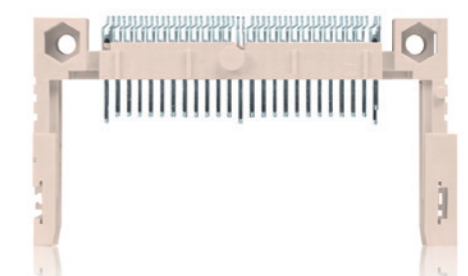
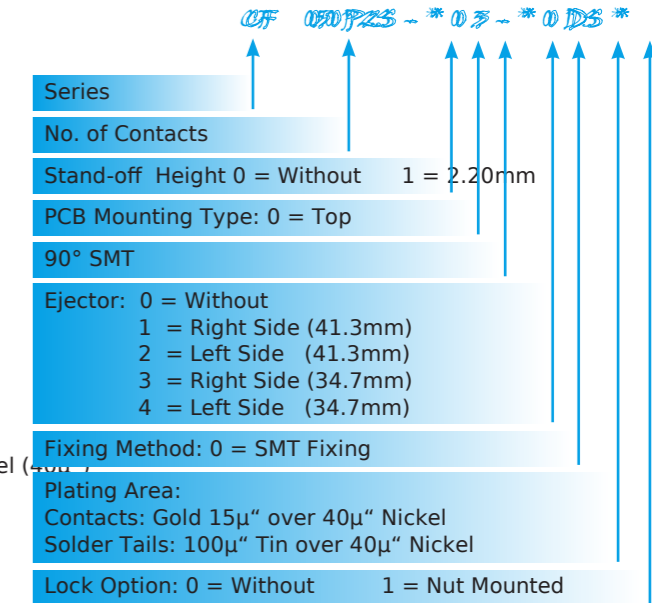
MATERIALS AND FINISH

Insulator: LCP, glass filled (UL94V-0)
 Push Button: Glass reinforced PBT (UL94V-0)
 SMT Metal: Brass, pure Sn
 Pivot Shell: Stainless Steel
 Contacts: Brass
 Plating: Contacts - Gold (15μ") over Nickel (40μ")
 Solder Tails - pure Sn

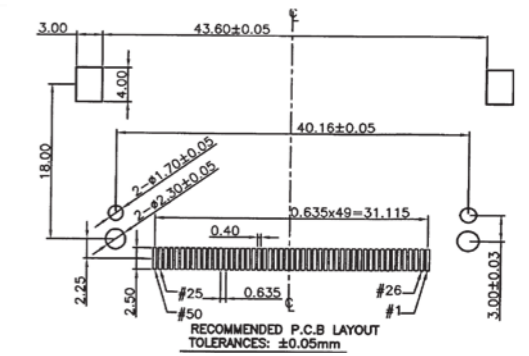
FEATURES

- Adapter for Compact Flash Card type I and II
- Available with various ejectors and stand-off s
- RoHS2011/65/EU

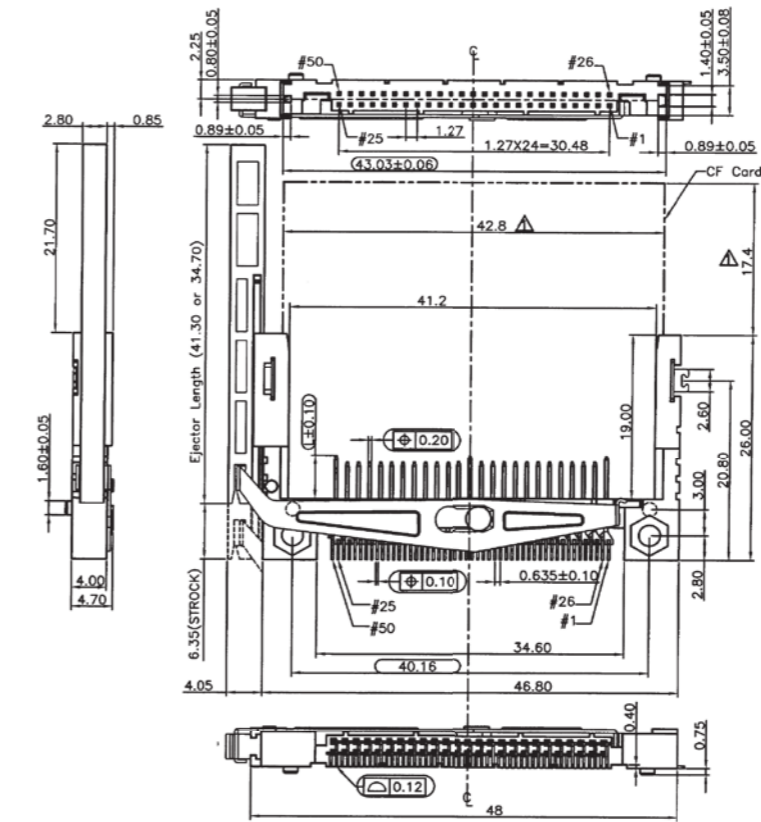
PART NUMBER



RECOMMENDED PCB LAYOUT



OUTLINE DIMENSIONS (NO STAND-OFF)



SPECIFICATIONS

Insulation Resistance: 1000MΩ at 500V DC
 Withstanding Voltage: 500Vrms
 Current Rating: 1A AC/DC max.
 Contact Resistance: 40mΩ max. at 20mV max.
 Operating Temp. Range: -55°C to +85°C
 Reflow Solder Temp.: 220°C min. / 60 sec, 260°C peak
 Mating Cycles: 10,000 times

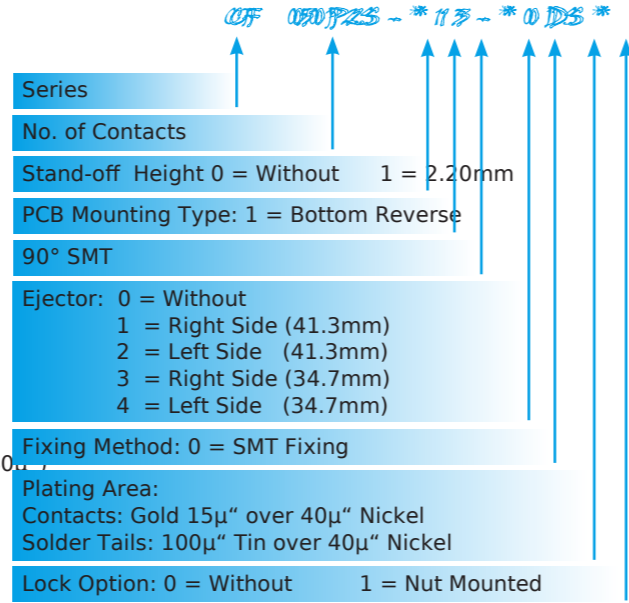
MATERIALS AND FINISH

Insulator: LCP, glass filled (UL94V-0)
 Push Button: Glass reinforced PBT (UL94V-0)
 SMT Metal: Brass, pure Sn
 Pivot Shell: Stainless Steel
 Contacts: Brass
 Plating: Contacts - Gold (15μ") over Nickel (40μ")
 Solder Tails - pure Sn

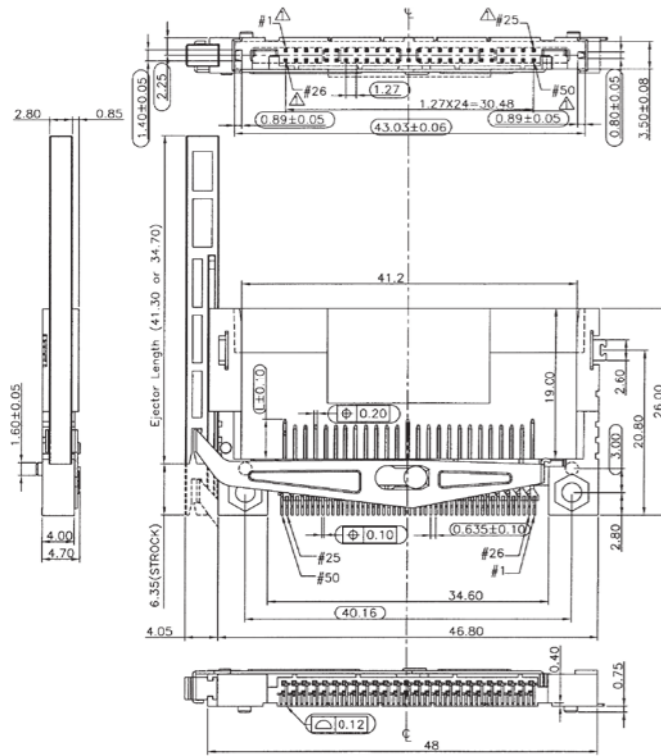
FEATURES

- Reverse type without stand-off height is not applicable to Compact Flash Card Type II
- Adapter for Compact Flash Card type I and II
- Available with various ejectors
- RoHS2011/65/EU

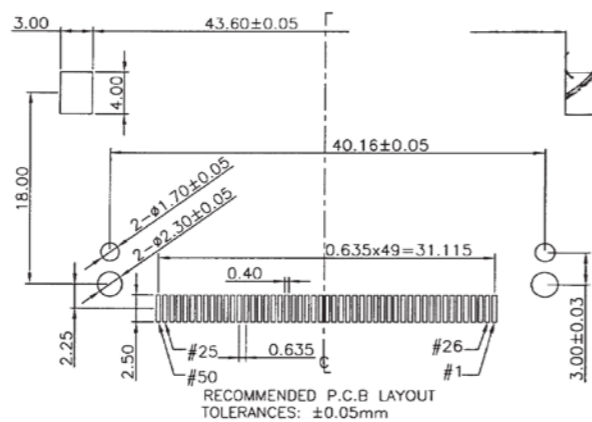
PART NUMBER



OUTLINE DIMENSIONS (STAND-OFF HEIGHT 2.20MM)



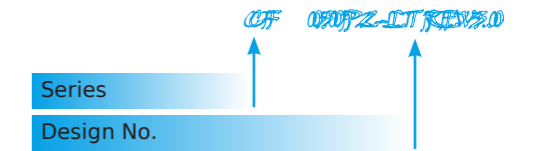
RECOMMENDED PCB LAYOUT



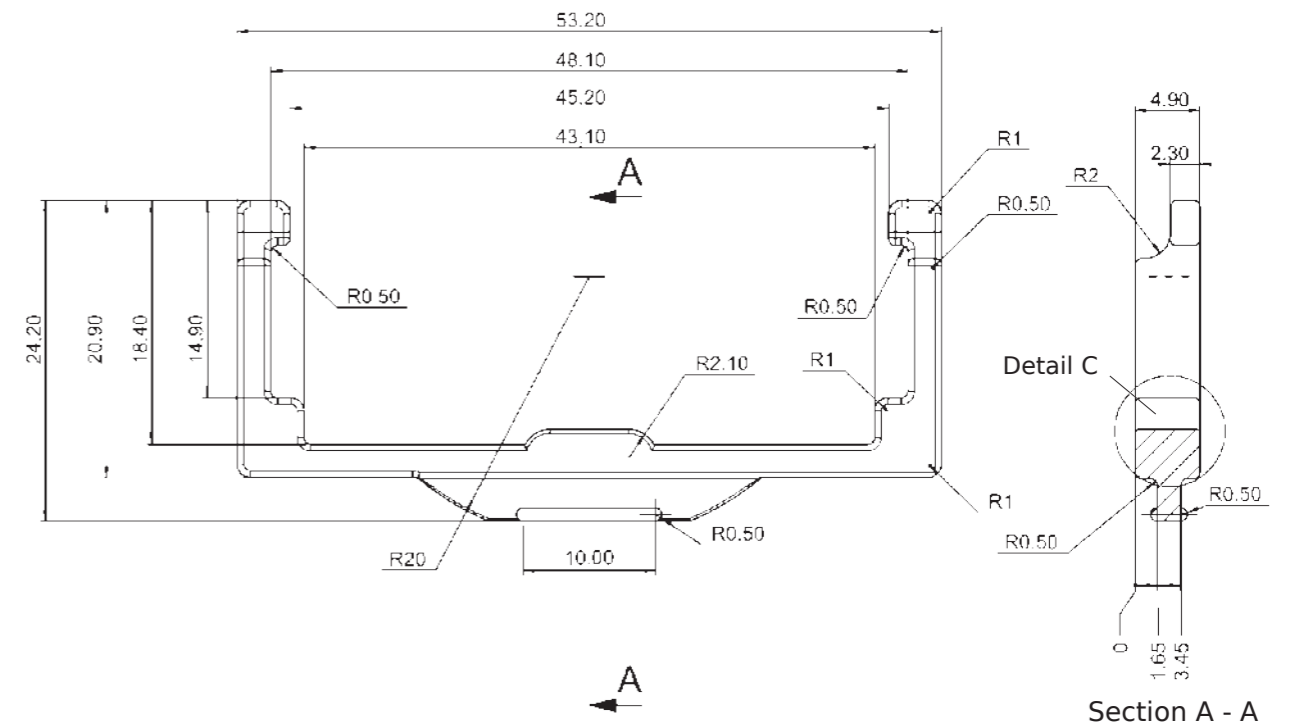
FEATURES

- Locking bow secure the Compact Flash card in the connector
- Locking bow must be used in combination with CF050P2-*03-00-DS connectors
- Locking bow is attached after the CF card is inserted into the connector
- RoHS2011/65/EU

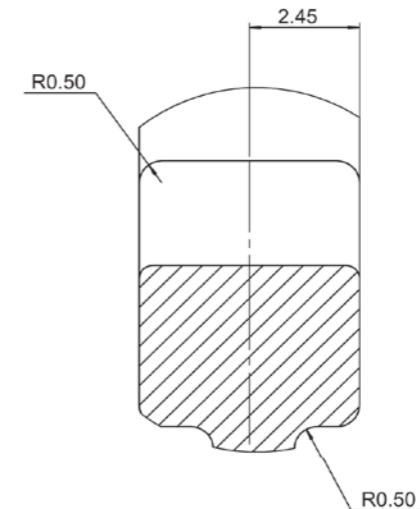
PART NUMBER



OUTLINE DIMENSIONS



DETAIL C



AUSTRIA / EASTERN EUROPE

CODICO GmbH & Co. KG
Zwingenstrasse 6 - 8
2380 Perchtoldsdorf
Austria

Contact: Mr. Christian Sichtar

Tel.: +43 186 305 0
Fax: +43 186 305 5000
e-mail: office@codico.com
Internet: www.codico.com

BENELUX

Logic Technology B.V.
John F. Kennedylaan 18
5981 XC Panningen
The Netherlands

Contact: Mr. René Janssen or
Mr. André de Ceuninck

Tel.: +31 77 307 8438
Fax: +31 77 307 8439
e-mail: info@logic.nl
Internet: www.logic.nl/yamaichi

DENMARK

Cabcon A/S
Stamholmen 193 A
2650 Hvidovre,
Denmark

Contact: Mr. Brian Dehlsen or
Mr. Flemming Schandorph

Tel. +45 38 76 03 15
Fax. +45 38 76 03 20
e-mail: fs@cabcon.dk
internet: www.cabcon.dk

FINLAND

Yleiselektronikka OY
Po Box 73
Luomannotko 6
02201 Espoo
Finland

Contact: Mr. Kai Nurmenniemi

Tel.: +358 10 2891 200
Fax: +358 10 2891 270
e-mail: kai.nurmenniemi@yeint.fi
Internet: www.yeint.fi

FRANCE

Manudax - France
ZA les Petites Haies
28, rue de Valenton
BP302
94709 Maisons-Alfort Cedex
France

Contact: Mr. Philippe Matoulet or
Mr. Christophe Lazerges

Tel.: +33 1 41 789444
Fax: +33 1 48 994186
e-mail: manudax@manudax.fr
Internet: www.manudax.fr

GERMANY

GLYN GmbH & Co. KG
Am Wörtzgarten 8
65510 Idstein / Taunus
Germany

Contact: Mr. Heiko Keller

Tel.: +49 (0)6126 590342
Fax: +49 (0)6126 590132
e-mail: heiko.keller@glyn.de
Internet: www.glyn.de

ISRAEL

Teder Electro Mechanical Engineering
14 Atir Yeda st.
Kfar-Saba 4464323
Israel

Contact: Mr. Gadi Feit

Tel.: +972 73 2331200
Fax: +972 73 2331233
e-mail: sales@teder.com
Internet: www.teder.com

RUSSIA

YE International
Obukhovskoy Oborony, 70, bld. 3A
St. Petersburg, 192029
Russia

Contact: Mr. Alexander Muraviev

Tel. +7 812 313 34 40 ext.613
Fax. +7 812 313 34 41
e-Mail: alexander.muraviev@yeint.ru
Internet: www.yeint.ru

SWEDEN

Nanomil AB
Vendevägen 90
SE-182 32 Danderyd
Sweden

Contact: Mr. Christian Rassmuson

Tel. +46 8 684 051 42
Fax. +46 739 013 742
e-Mail: christian@nanomil.se
Internet: www.nanomil.se

NORWAY

Link Nordic AS
Gramveien 76
NO - 1801 Askim
Norway

Contact: Mr. Yngve Mobrårthen

Tel.: +47 69 88 98 99
Fax: +47 48 1520 71
e-mail: yngve.mobrathen@linknordic.com
Internet: www.linknordic.com

SWITZERLAND

Sicovend AG
Alte Poststrasse 1
8310 Kempththal
Switzerland

Contact: Mr. Othmar Stocker

Tel.: +41 52 354 80 24
Fax: +41 52 354 80 00
e-mail: othmar.stocker@sicovend.ch
Internet: www.sicovend.ch

UNITED KINGDOM

Cyntech Components Ltd.
Unit 29, Chancerygate Business Park
Goulds Close, Denbigh West,
Milton Keynes MK1 1EQ
UK

Contact: Mr. Ian Mort

Tel.: +44 (0)1908 37 39 27
Fax: +44 (0)1908 36 53 05
e-mail: sales@cyntech.co.uk
Internet: www.cyntech.co.uk

C

CF024-S9-BL-*-*-TRAY.....	47
CF050P1S-003-00DS*.....	47
CF050P1S-013-00DS*.....	52
CF050P2-*03-*0-DS3.....	49
CF050P2-013-*0DS3.....	50
CF050P2S-*1 3-*0DS*.....	54
CF050P2S-*03-*0DS*.....	53
CF050P15 0130 0DS*.....	48
CF050P2-LT Rev3.0.....	55
CNT-S-*-*-*(TH Single Deck).....	60

F

FMA006-3700-0.....	40
FMA006-3800-0.....	41
FMS006-3810-0.....	39
FMS006-2610-0.....	33
FMS006-2620-0.....	34
FMS006-3710-0.....	38
FMS006-3810-0.....	39
FMS006-5100-0.....	35
FMS008-6001-0.....	40
FPS009-2305-0.....	12
FPS009-2409-0.....	10
FPS009-2901-0.....	6
FPS009-2903-0-VE.....	8
FPS009-2920-0.....	16
FPS009-2960-0.....	14
FPS009-2970-0.....	18
FPS009-3001-BL.....	20
FPS009-3002-BL.....	20
FPS009-3003-BL.....	20
FPS009-3202-BL.....	22
FPS009-4200-0 (03).....	23
PS017T-1000-FL-TRAY.....	25
FPS017T-2000-FL-TRAY.....	24
FRS016T-2000-0V3.....	46
FUA006-3210-0.....	45
FUA006-3220-0.....	45
FUS006-3210-0.....	45
FUS006-8500-0.....	44

P

PCMCIA-1088-*.....	62
PCMCIA-1260-*.....	60
PJS008-2003-1.....	29
PJS008-2004-0-VE.....	28
PJS008-2005-*VE.....	30
PJS008-2120-0.....	27
PJS008-2130-0.....	31
PJS008-2130-1.....	26
PJS008T-0000-0.....	33
PJS008U-3000-0.....	32

CARD CONNECTORS

Version November 2018

TECHNICAL DATA ARE SUBJECT TO ALTERATION WITHOUT PRIOR NOTICE

YAMAICHI ELEC TRONICS
Deutschland GmbH
Concor Park
Bahnhofstraße 20
85609 Aschheim-Dornach
Germany

Phone +49 (0)89 45109 - 0
Fax +49 (0)89 45109 - 110
E-Mail sales@yamaichi.de
Web www.yamaichi.de

YAMAICHI ELEC TRONICS
Italia s.r.l.
Centro Direzionale Colleoni
Via Colleoni, 1
Palazzo Taurus Ing. 1
20864 Agrate Brianza (MB)
Italy

Phone +39 039 6881-185
Fax +39 039 6892-150
E-Mail sales@yamaichi.it
Web www.yamaichi.it

YAMAICHI ELEC TRONICS
GB Ltd.
6 The Clockhouse
Stratton Park
Micheldever
Hampshire SO21 3DP
Great Britain

Phone +44 (0)7808 493377
Fax +44 (0)1962 774902
E-Mail sales@yamaichi.co.uk
Web www.yamaichi.co.uk