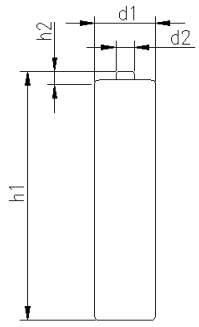


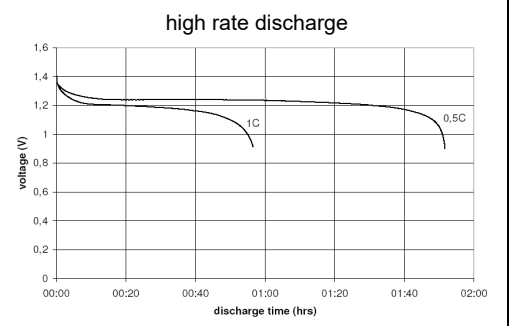
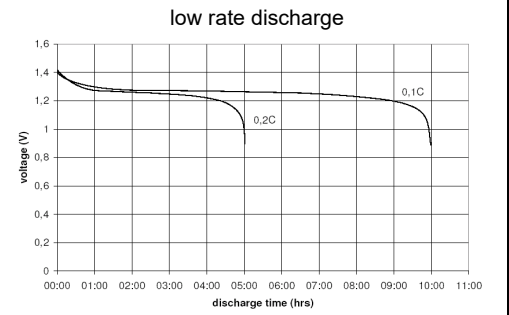
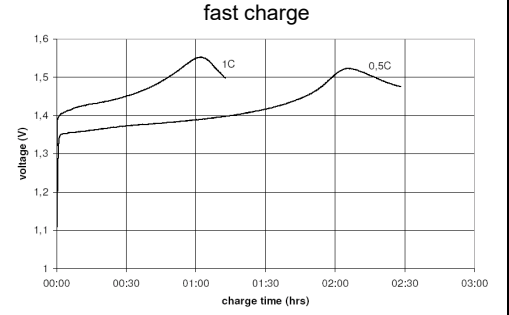
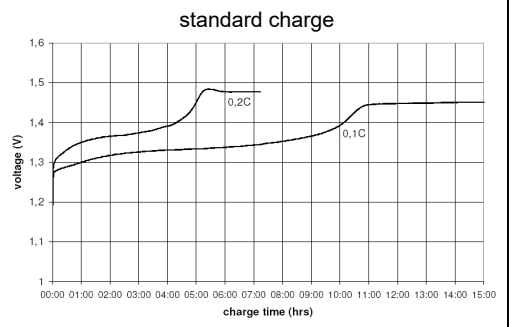
		Conditions	
<b>cell type:</b>	NiMH		
<b>cell size:</b>	AAA		
<b>nominal voltage:</b>	1.2 V		
<b>max. charge voltage:</b>	1.5 V	at standard charge (0.1C / 20°C)	
<b>capacity</b>			
nominal:	1000 mAh	discharge at 0.2C	
minimum:	800 mAh	discharge at 0.2C	
	750 mAh	discharge at 1C	
		1.0V end discharge voltage	
		ta: 20°C	
<b>max. continuous discharge current:</b>	2400 mA	ta: 0...45°C	
<b>charge</b>		current	time
standard charge:	100 mA	14....16hrs	
quick charge:	250 mA	4hrs	
fast charge:	1000 mA	1hr	
<b>recommended charge termination control parameters:</b>	0...5 mV	- ΔV (-deltaV)	
	0.8...1 °C	temperature rise per minute	
	45...50 °C	TCO (temperature cut off)	
<b>trickle charge current:</b>	5...25 mA	(recommended)	
<b>continuous overcharge:</b> (less than 1 year)	≤ 80 mA	no conspicuous deformation no leakage	
<b>internal resistance:</b> (impedance)	≤ 50 mΩ	at 1KHz battery fully charged	
<b>life expectancy:</b>	≥ 500 cycles	acc. IEC standard	
<b>self discharge</b>			
charge retention:	≥ 80 %	after 12 months storage at 20°C	
<b>initial capacity:</b>	≥ 550 mAh	within 30 days after delivery discharge at 0.2C	
<b>ambient temperature range:</b>	0...45 °C	standard charge	
	10...40 °C	fast charge	
	- 20...65 °C	discharge	
	- 20...50 °C	storage (≤3months)	
	- 20...40 °C	storage (≤6months)	
	- 20...30 °C	storage (≤24months)	

QCT1: 20/750/50  
QCT2: 30/700/55

mechanical specifications			
cell dimensions			
diameter d1:		10.5 - 0.7	mm
diameter d2:	max.	3.8	mm
height h1:		44.5 - 1.5	mm
height h2:	min.	0.8	mm
weight:		12.5 ± 2	g



**Diagrams**



	<b>ANSMANN Specifications for model:</b>	<b>NiMH Battery</b>
		<b>AAA - 1000mAh low self discharge</b>
	data sheet no. / part no.	
	supplier no.	702069
author / date	TG / 22.01.2019	

Manufacturer reserves the right to alter or amend the design, model and specification without prior notice