

Precision IC-Socket for SMD Processing 2,54 mm

Series

015

pitch
2,54

termination

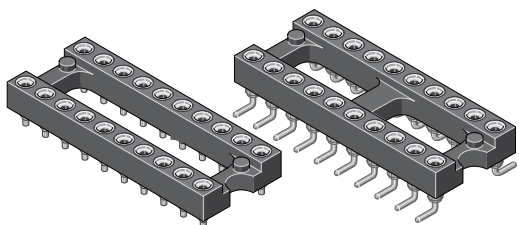


mating pin
size

⌀ **0,40-0,56**
□ **0,25x0,45**

max.
pincount
064

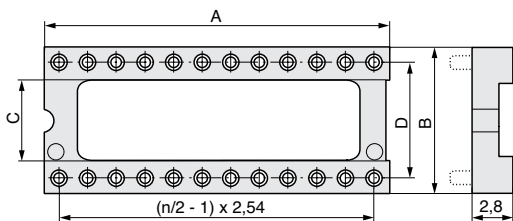
MPE-Garry GmbH • Schafflerstraße 13 • 87629 Füssen • Germany • Phone: +49 (0) 83 62 / 91 56-0 • Fax: +49 (0) 83 62 / 91 56-500 • Email: vk@mpe-connector.de • www.mpe-connector.de



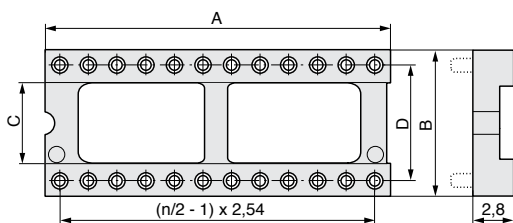
Rated current	3,0 A
Rated voltage	150 VRMS / Vdc
Withstand voltage	1000 VRMS for one minute
Material contact	Copper alloy
Material clip	BeCu
Material insulator	High temp. thermoplast UL94V-0
Operating temperature	-55°C to +125°C
Max. soldering temper.	260°C for 10 seconds

All dimensions in mm.

Variation



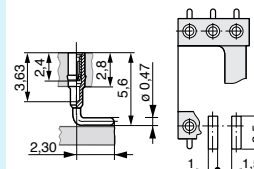
1



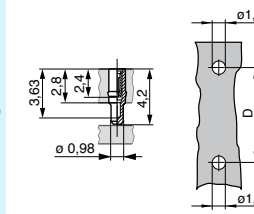
2

Contact type

H1



H5

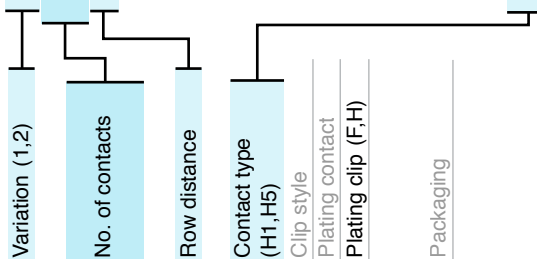


	no. of contacts	row distance (code)	row distance (mm)	see figure left	see figure left	see figure left	available in variation
n	D	A	B	C			
004	3	7,62	5,00	10,10	4,40	1	
006	3	7,62	7,60	10,10	4,40	1	
008	3	7,62	10,10	10,10	4,40	1	
010	2	5,08	12,60	7,60	-	1	
010	3	7,62	12,60	10,10	4,40	1	
012	3	7,62	15,20	10,10	4,40	1	
014	3	7,62	17,70	10,10	4,40	1	
016	3	7,62	20,30	10,10	4,40	1	
018	3	7,62	22,80	10,10	4,40	2	
020	3	7,62	25,30	10,10	4,40	2	
020	4	10,16	25,40	12,60	6,50	2	
022	3	7,62	27,80	10,10	4,40	2	
022	4	10,16	27,80	12,60	6,50	2	
024	3	7,62	30,40	10,10	4,40	2	
024	4	10,16	30,40	12,60	6,50	2	
024	6	15,24	30,40	17,70	10,60	2	
028	3	7,62	35,50	10,10	4,40	2	
028	4	10,16	35,50	12,60	6,50	2	
028	6	15,24	35,50	17,70	10,60	2	
032	4	10,16	40,60	12,60	6,50	2	
032	6	15,24	40,60	17,70	10,60	2	
036	6	15,24	45,70	17,70	10,60	2	
040	6	15,24	50,80	17,70	10,60	2	
042	6	15,24	53,30	17,70	10,60	2	
048	6	15,24	60,90	17,70	10,60	2	

Clip style:
S = 4 finger clip

Plating:
T = Sn
F = Au
H = Au 0,75 μ

Packaging:
T = Tube



Order code:

015-2-2-2-2-2-ST-2-LT0



www.mpe-connector.de

Mating series **033**
see page **2-2**