

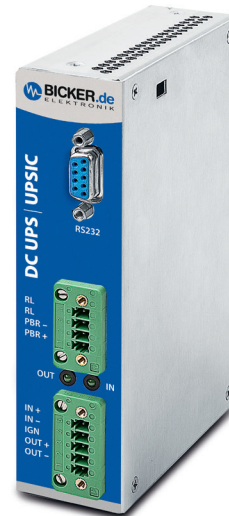
# UPSIC-1205D

12 VDC / 5 A

- ✓ Regulated voltage at backup
- ✓ Maintenance-free supercaps for energy storage
- ✓ High cycle stability > 500 000
- ✓ Charge time <60 sec at maximum charge current
- ✓ Extended temperature range -20...+70 °C
- ✓ Compact DIN rail chassis
- ✓ Active reverse polarity protection
- ✓ Power Fail signal via relay, RS232 connection
- ✓ Intelligent charge sharing
- ✓ Reboot Function
- ✓ Operation of UPS at host without software possible
- ✓ Output release from 90 % supercap capacity



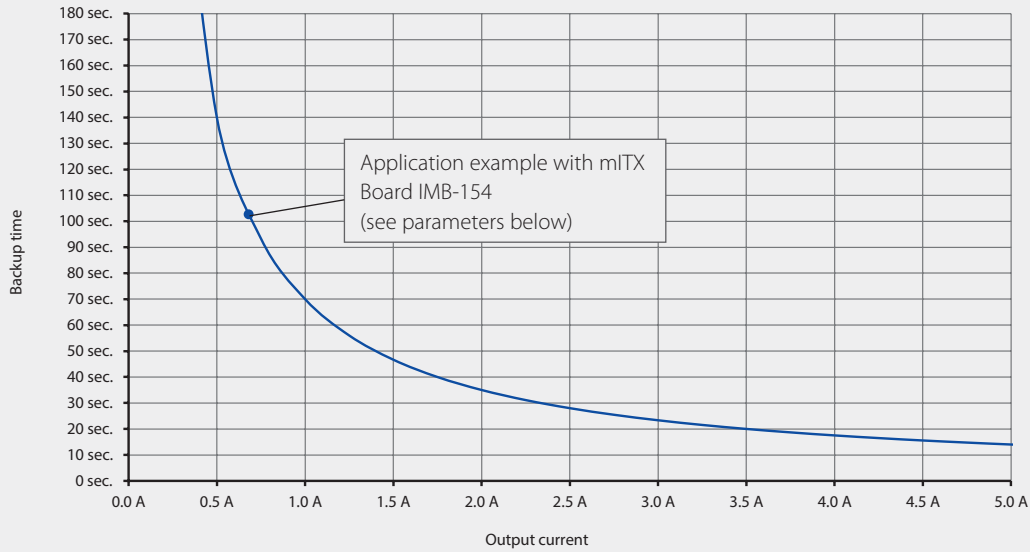
**NEW**



**Including Software**  
UPS Control Center

| Technical data              |  |
|-----------------------------|--|
| Input voltage               | 12 VDC (11.6...16 VDC)   |
| Input current               | 5.8 A nom.   |
| Output power                | 60 W   |
| Output voltage battery mode | 12 VDC ±2 % regulated  |
| Output voltage normal mode  | $V_{in} - 0.3 \text{ V}$ at 100% load  |
| Output current              | 5 A  |
| Output ripple               | ≤30 mV   |
| Backup efficiency           | 97 % ( $V_{\text{Supercaps}} = 9.5 \text{ V}$ , $I_{\text{out}} = 2.5 \text{ A}$ ) |
| Charge current              | Depending on load up to 6.2 A CC ( $V_{\text{Supercap}}$ )                         |
| Charging method             | CC / CV  |
| Storage type                | Supercaps 4x 100 F   |
| Charging time               | <60 sec at maximum charge current @ 4x 100 F                                       |
| Backup time                 | See diagram  |
| Protection                  | Overcurrent protection – Non LATCH<br>Active reverse polarity protection           |
| Safety / EMC                | CE   |
| Temperature                 | Operating: -20...+70 °C / Storage: -20...+70 °C                                    |
| Humidity                    | Operating: 10...85 % RH, non-condensing / Storage: 10...90 % RH, non-condensing    |
| Dimensions (WxDxH)          | 36 x 103 x 147 mm  |
| Weight (net)                | 0.367 kg   |

## Backup time



**Type 4x 100F:**  
 Standby@NoLoad >30 min  
 — @nom. Cap. & 25 °C

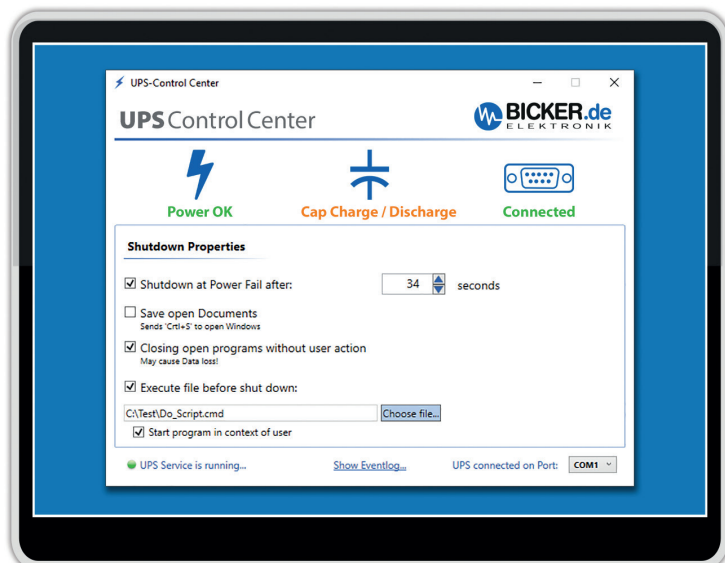
### Parameters of the test system for the backup curve

|              |  |                      |  |
|--------------|--|----------------------|--|
| <b>Board</b> | IMB-154 L0.36<br>SN: 59M0X2003883<br>CPU: Braswell N3150; 4x 1.60GHz                                   | <b>ROM</b>           | 1x mSATA 32GB<br>Type: CIE MSM300M JB032GS<br>SN: CIE164905767                             |
| <b>RAM</b>   | 2 x 4 GB / DDR3 SO-DIMM<br>1600MHz FB<br>Type: CIR-S3SUSKA 1604G<br>SN: CIR 154630106<br>CIR 154630106 | <b>OS</b>            | Microsoft Windows 10 Enterprise Evaluation<br>Version 1511<br>Build 10586.589 (2016/09/16) |
|              |  | <b>Test Software</b> | BurnInTest V7.1 Pro  |
|              |  | <b>Test results</b>  | 100% load: 1 min. 43 sec. = 103 sec  |

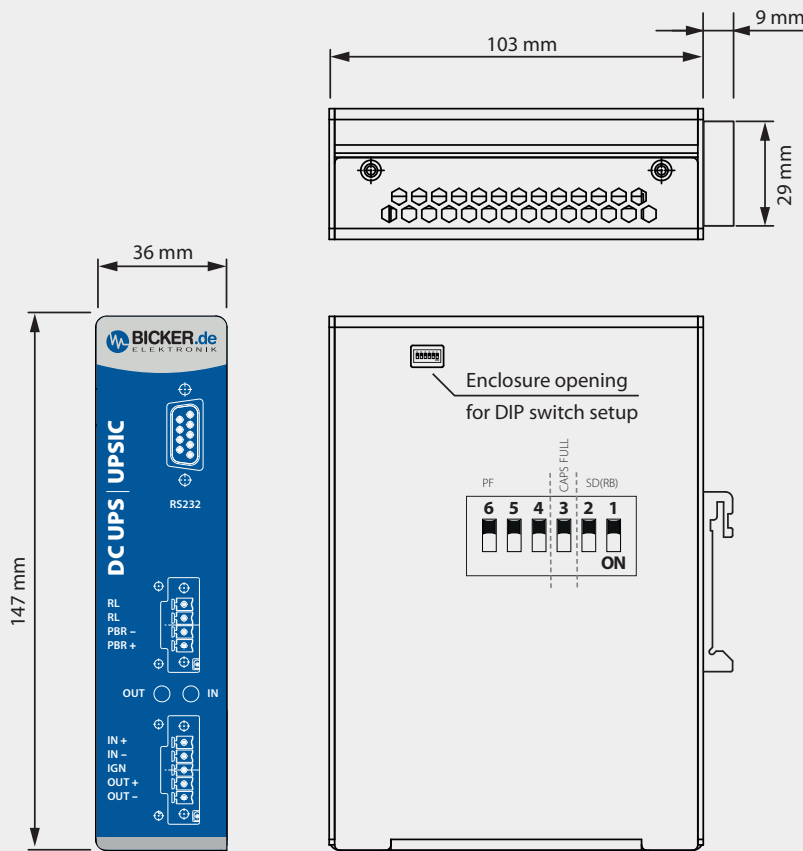
## Software UPS Control Center

### UPS Control Center

The UPS software is available for free download directly on the product page at [www.bicker.de](http://www.bicker.de).

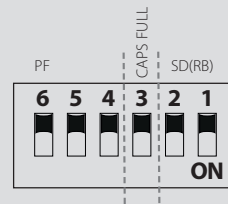


Drawing UPSIC-1205D



**Power Fail:** relay contact 3+4=0 Ω  
0.5 A@125VAC / 1 A@24VDC

**DIP switch setup**



**Connectors**

**RS232**

|    |   |
|----|---|
| 01 | DCD at PC – Detection cable connected     |
| 02 | TXD (is connected to RXT at PC)           |
| 03 | RXD (is connected to TXD at PC)           |
| 04 | Shutdown signal detection                 |
| 05 | GND                                       |
| 06 | DSR at PC – Detection caps loading status |
| 07 | RTS at PC – Supply voltage                |
| 08 | CTS at PC – Power Fail detection          |
| 09 | N/A                                       |

**RL / PBR**

|            |   |
|------------|---|
| 04 / RL    | Relay connection                          |
| 03 / RL    | Relay connection                          |
| 02 / PBR – | (V–) Shutdown-Signal (Impulse 200-400 ms) |
| 01 / PBR + | (V+) Shutdown-Signal (Impulse 200-400 ms) |

**IN / IGN / OUT**

|            |           |
|------------|-----------|
| 05 / IN +  | V+ Input  |
| 04 / IN –  | V– Input  |
| 03 / N.C.  | N.C.      |
| 02 / OUT + | V+ Output |
| 01 / OUT – | V– Output |

**Power Fail (PF) - Timer**

| 6   | 5   | 4   | PIN      |
|-----|-----|-----|----------|
| ON  | ON  | ON  | Software |
| OFF | ON  | ON  | 3s       |
| ON  | OFF | ON  | 8s       |
| OFF | OFF | ON  | 20s      |
| ON  | ON  | OFF | 40s      |
| OFF | ON  | OFF | 60s      |
| ON  | OFF | OFF | 100s     |
| OFF | OFF | OFF | 150s     |

**Output release**

| PIN 3 |   |  |
|-------|---|--|
| ON    | Output released when V <sub>CAP</sub> over 90 % |  |

**Shutdown Timer**

| PIN              | 2   | 1   |
|------------------|-----|-----|
| No Reboot        | ON  | ON  |
| Reboot after 10s | OFF | ON  |
| Reboot after 30s | ON  | OFF |
| Reboot after 60s | OFF | OFF |

Tolerance ±0.5 mm

Specification is subject to change without notice. Errors excepted. Status as at: 04.02.2019