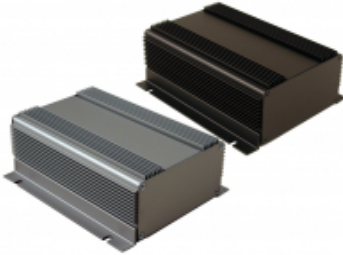


Heat Dissipating Extruded Aluminum Enclosures *1455HD Series*

Fins for Heat Dissipation, Wall-Mounting Flanges

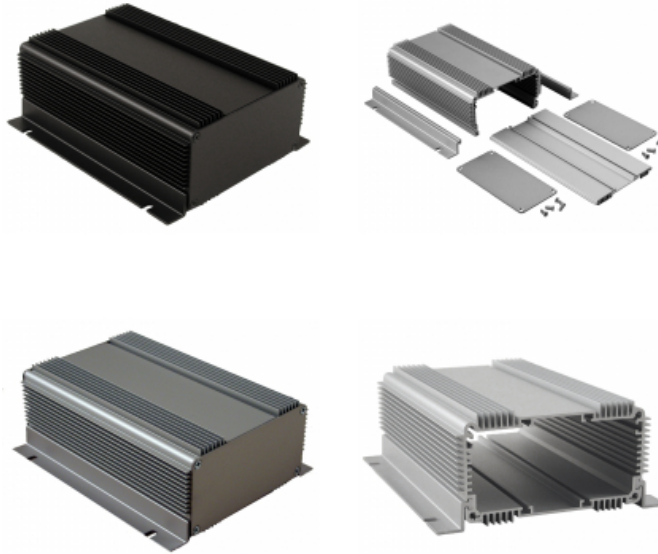
Key Features



- Designed to house P.C. boards or equipment.
- Easy wall mounting or shelf mounting with two removable flanges
- Sized for standard eurocard P.C. boards.
- P.C. boards mount horizontally by sliding into internal slots extruded into the enclosure body.
- Two piece body - with easily removable belly plate for easy access to top interior of enclosure.
- Extruded body & aluminum endplates with a choice of either clear or black anodized finish.
- Includes eight (8) assembly screws - either clear or black assembly screws to match enclosure panels & body. NOTE: Recommended screw torque is 5 lbf.in (56.5 cN.m).
- For black replacement screws (quantity 100) order part number **1455MS100BK**
- For clear replacement screws (quantity 100) order part number **1455MS100**
- For technical information, please refer to documentation under "Product Resources."



Photo Features



Available in clear or black anodize

Enclosure kit includes main extrusion, slide-in mounting plate, mounting flanges, end panels, and screws. Internal slots make PC board installation easy.

Enclosures

Part Number	Anodize Color	Length	Width	Height
1455KHD1201	Clear	120	86	51
1455KHD1201BK	Black	120	86	51
1455KHD1601	Clear	160	86	51
1455KHD1601BK	Black	160	86	51
1455NHD1201	Clear	120	111	61
1455NHD1201BK	Black	120	111	61
1455NHD1601	Clear	160	111	61
1455NHD1601BK	Black	160	111	61

