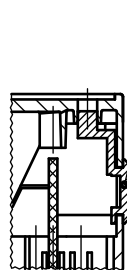
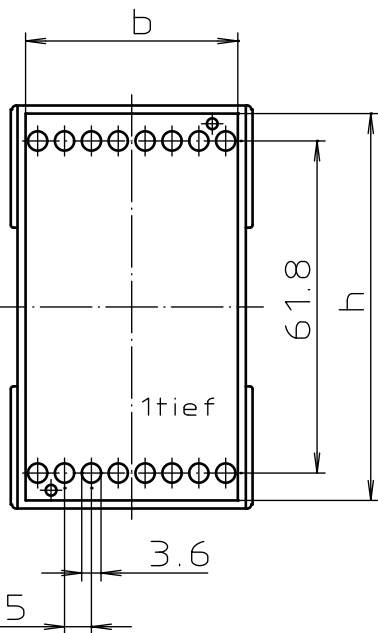
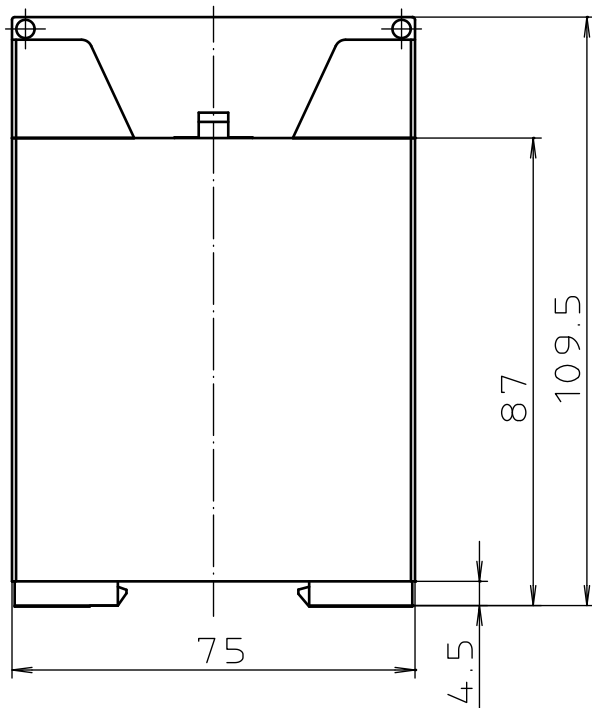
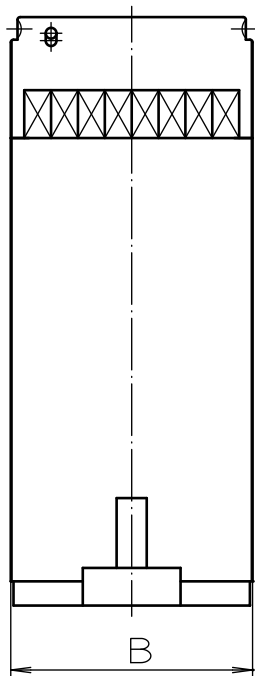
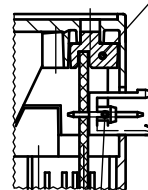


"Schutzvermerk nach DIN 34 beachten"



Blindplatte
CNB 100



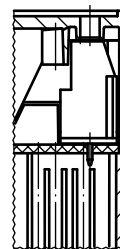
Stiftleiste
STL 950 / __ V

STL-Adapter
CNA 100

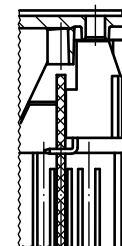


Anschluß-
klemme
AK 950 / __

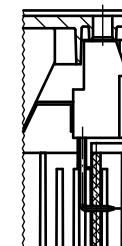
Zubehör



Anschluss-
klemme
AK 700 / V



Anschluss-
klemme
AK 700 / H



Anschluss-
klemme
AK 700 / HB

Haube hoch (CNH ____ H)

Haube niedrig (CNH ____ N)

Blindplatte (CNB 100)

STL-Adapter (CNA 100)

Sonder:

Unterteil mit
Seitenklappe
(CNS .. AK)

Modell	max. Klemmen	B	b	h
CN 22 AK	8	22.5	17.0 ^{+0.2} _{-0.1}	54 ^{+0.3} _{-0.2}
CN 45 AK	16	45.0	39.5 ^{+0.2} _{-0.1}	72 ^{+0.3} _{-0.2}
CN 55 AK	20	55.0	49.5 ^{+0.2} _{-0.1}	72 ^{+0.3} _{-0.2}
CN 70 AK	26	70.0	64.5 ^{+0.3} _{-0.2}	72 ^{+0.3} _{-0.2}
CN 100 AK	38	100.0	94.5 ^{+0.4} _{-0.2}	72 ^{+0.3} _{-0.2}

Maßstab: 1:1

Zchn.Nr: 3K 5180.001.05

Artikel: Artikelübersicht
Klemmgehäuse
CombiNorm Classic
CN .. AK (5mm Raster)
Katalogzeichnung

3626 20.08.02
3137 08.02.95
3115 05.01.95
3055 26.09.94

Ae.Nr: Datum:

DISK : 2 601 154
Datum: 13.01.94 HR

